

# TSX ETZ

Configuration of your computer for  
TSX ETZ direct connection by  
serial link

Eng

V1.0



---

# Table of Contents



---

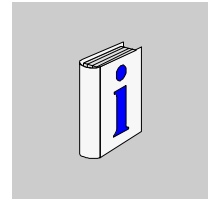
	<b>About the book</b> . . . . .	<b>5</b>
<b>Chapter 1</b>	<b>Configuration and connection for Windows 95</b> . . . . .	<b>7</b>
	At a Glance . . . . .	7
	Configuration of the computer . . . . .	8
	Configuration of the direct cable connection . . . . .	14
	Connection to the TSX ETZ Module with null modem . . . . .	22
<b>Chapter 2</b>	<b>Configuration and connection for Windows 98</b> . . . . .	<b>25</b>
	At a Glance . . . . .	25
	Configuration of the computer . . . . .	26
	Configuration of the direct cable connection . . . . .	30
	Connection to the TSX ETZ Module with null modem . . . . .	37
<b>Chapter 3</b>	<b>Configuration and connection for Windows 2000</b> . . . . .	<b>39</b>
	At a Glance . . . . .	39
	Configuration of the computer . . . . .	40
	Configuration of the Dial-Up Networking . . . . .	46
	Connection to the TSX ETZ Module with null modem . . . . .	61
<b>Chapter 4</b>	<b>Configuration and connection for Windows NT4</b> . . . . .	<b>63</b>
	At a Glance . . . . .	63
	Configuration of the computer . . . . .	64
	Configuration of the Dial-Up Networking . . . . .	74
	Connection to the TSX ETZ Module with null modem . . . . .	80
<b>Chapter 5</b>	<b>Configuration and connection for Windows Millennium</b> . . . . .	<b>83</b>
	At a Glance . . . . .	83
	Configuration of the computer . . . . .	84
	Configuration of the direct cable connection . . . . .	88
	Connection to the TSX ETZ Module with null modem . . . . .	95
<b>Chapter 6</b>	<b>Connection problems</b> . . . . .	<b>97</b>
	Connection problems . . . . .	97

---

---

---

## About the book



---

### At a Glance

**Document Scope** This manual contains examples of your computer configuration in order to access the TSX ETZ Module http server using its serial link.

---

### Revision History

Rev. No.	Changes
1	Initial version.

---

**User Comments** We welcome your comments about this document. You can reach us by e-mail at [TECHCOMM@modicon.com](mailto:TECHCOMM@modicon.com)

---



---

# Configuration and connection for Windows 95



---

## At a Glance

### Presentation

This non-exhaustive document is an example of your computer configuration in order to access the TSX ETZ Module http server using its serial link. Although reasonable care has been taken to provide accurate and authoritative information in this document, no responsibility is assumed by Schneider Automation for any consequences arising from the use of this document.

### What's in this Chapter?

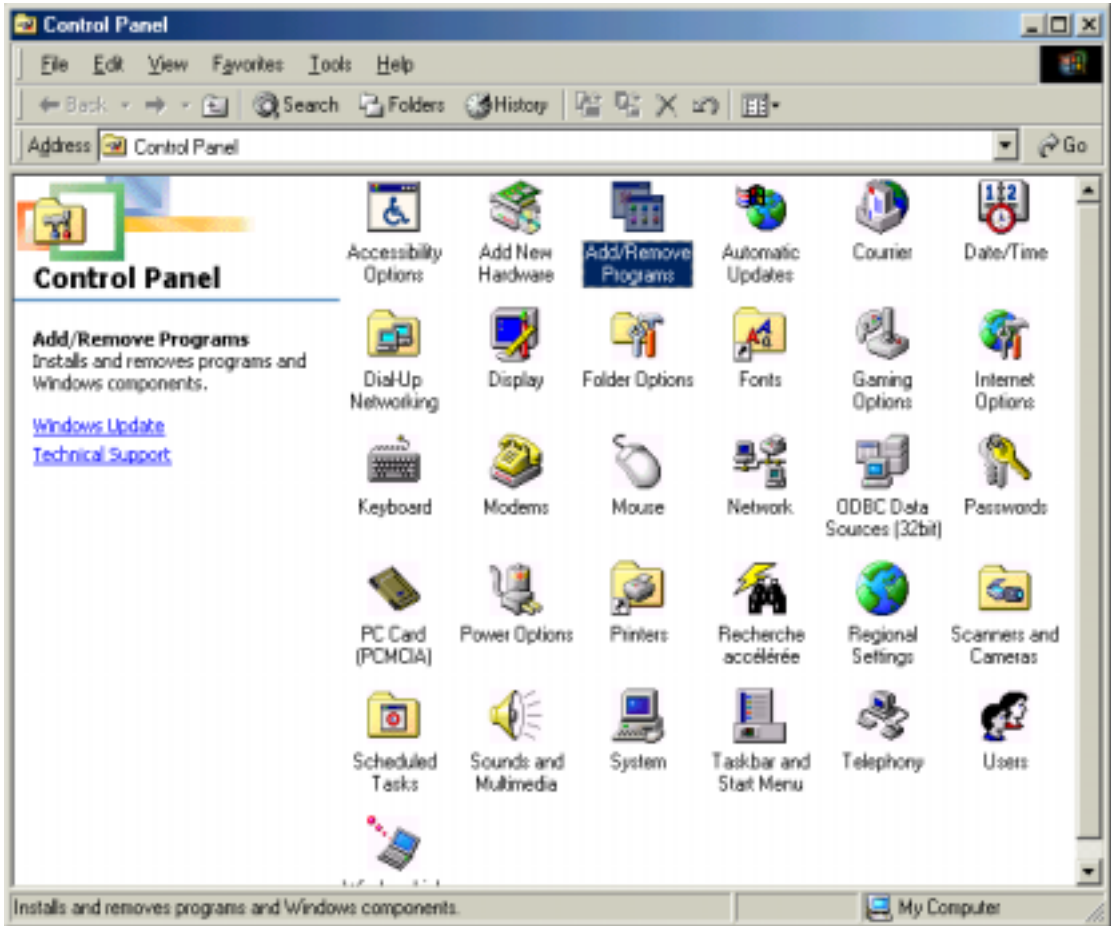
This Chapter contains the following Maps:

Topic	Page
Configuration of the computer	8
Configuration of the direct cable connection	14
Connection to the TSX ETZ Module with null modem	22

## Configuration of the computer

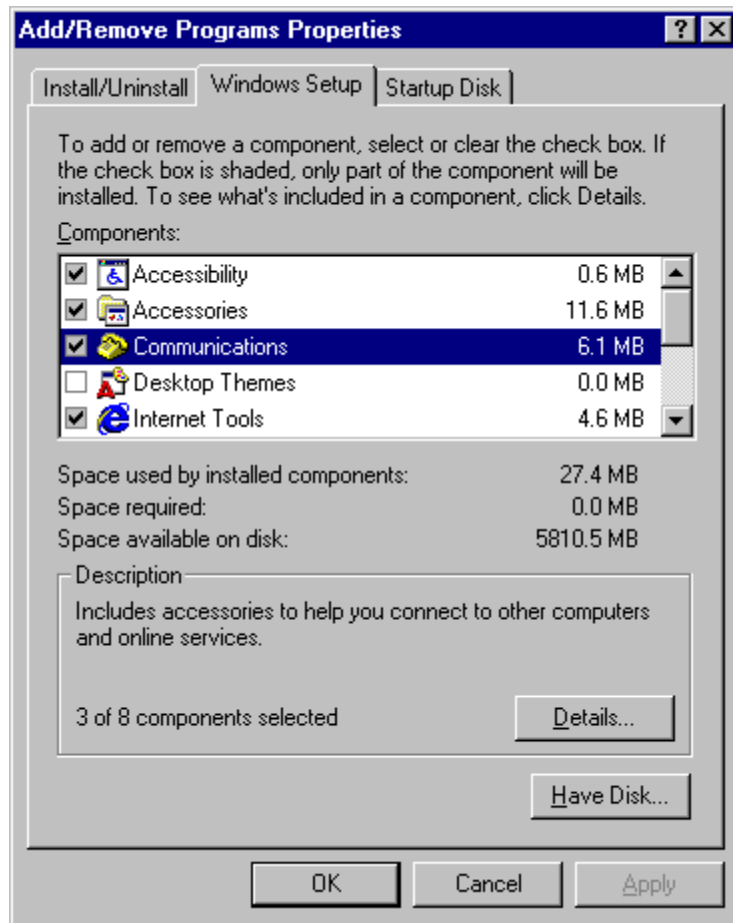
### Presentation

Click on "**Start**", point to "**Settings**", and then click on "**Control Panel**".  
The following dialog box is displayed:



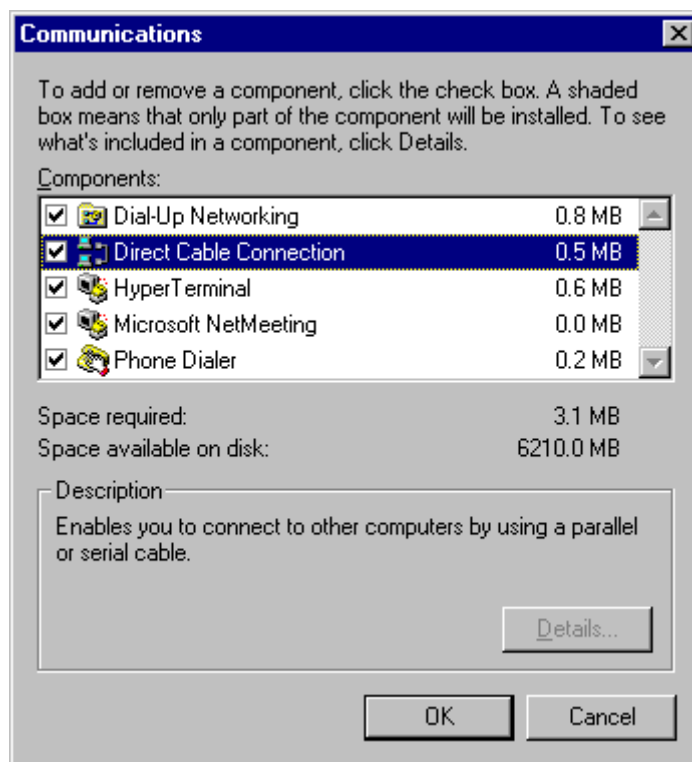
Double click on "**Add / Remove Programs**": in the menu "**Add / Remove Programs Properties**", click on the tab "**Windows Setup**".

The following dialog box is displayed:



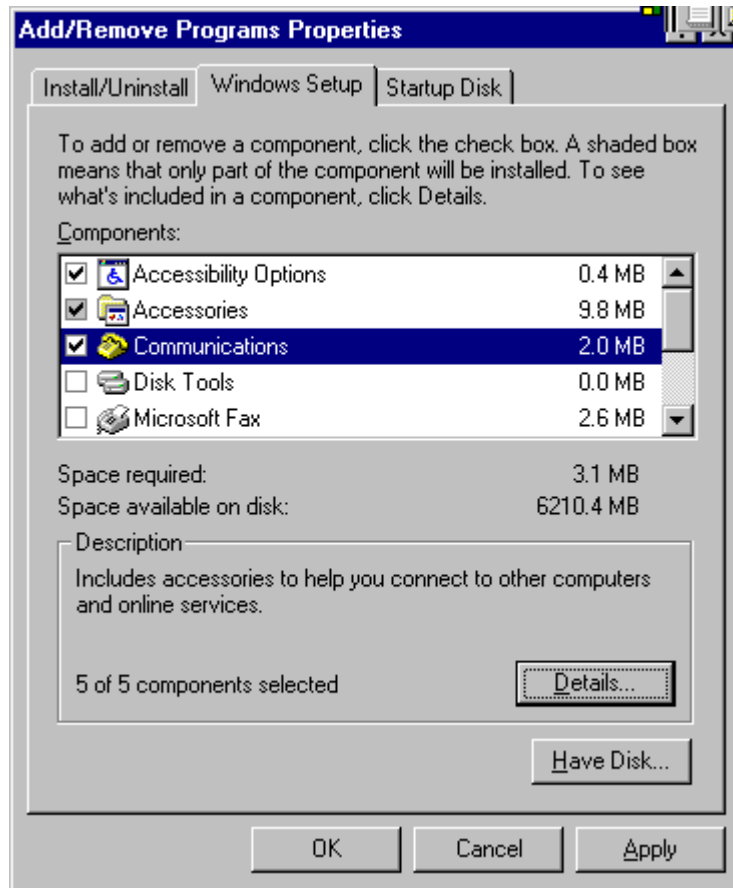
Select "**Communications**" and then click on "**Details**".

The following dialog box displayed:



Add the components "**Dial-Up Networking**" and "**Direct Cable Connection**". Then click on "**OK**".

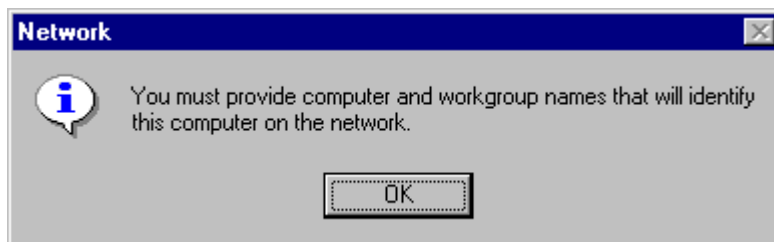
The following dialog box displayed:



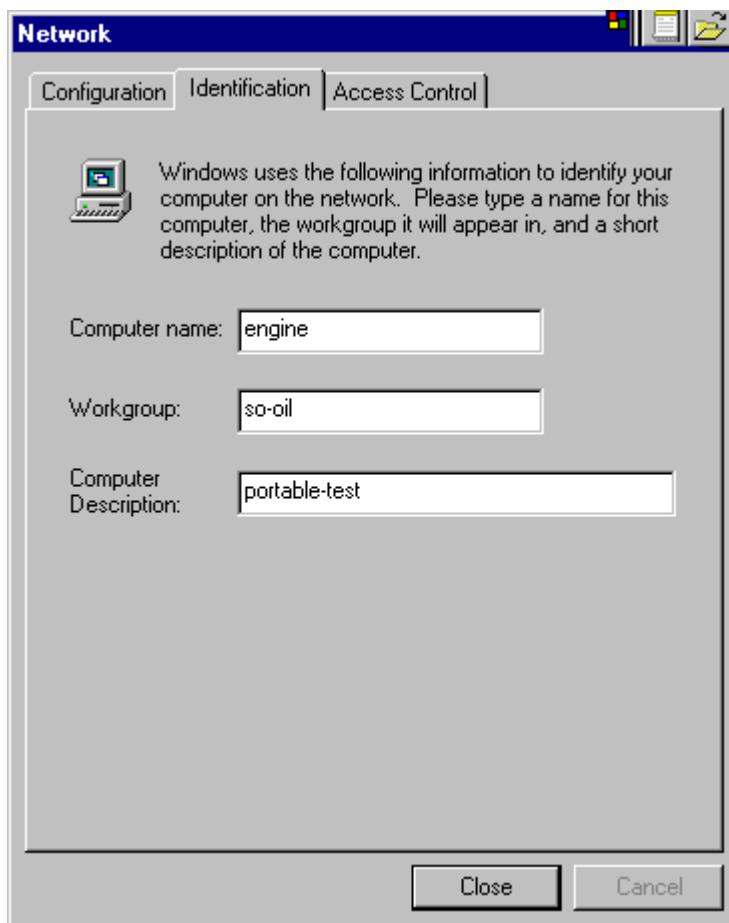
Insert the Windows 95 CD-ROM if needed and then click on "**OK**" to validate the component "**Communications**".

If the computer is not identified by the network component, you must follow these 2 steps:

1. The dialog box is displayed:

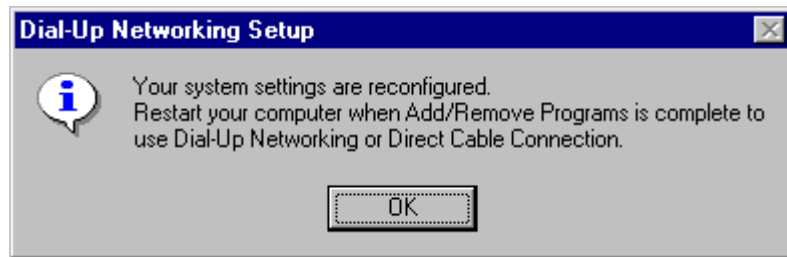
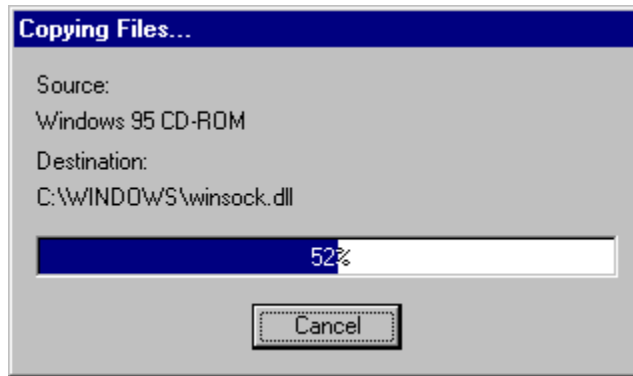


Click on "OK". The dialog box "Network" is displayed:



2. In the tab identification, type the "**Computer name**" and the "**Workgroup**". Click on "**Close**".

Then, Window installs different files on this directory:



Click on "**OK**" to restart your computer.

---

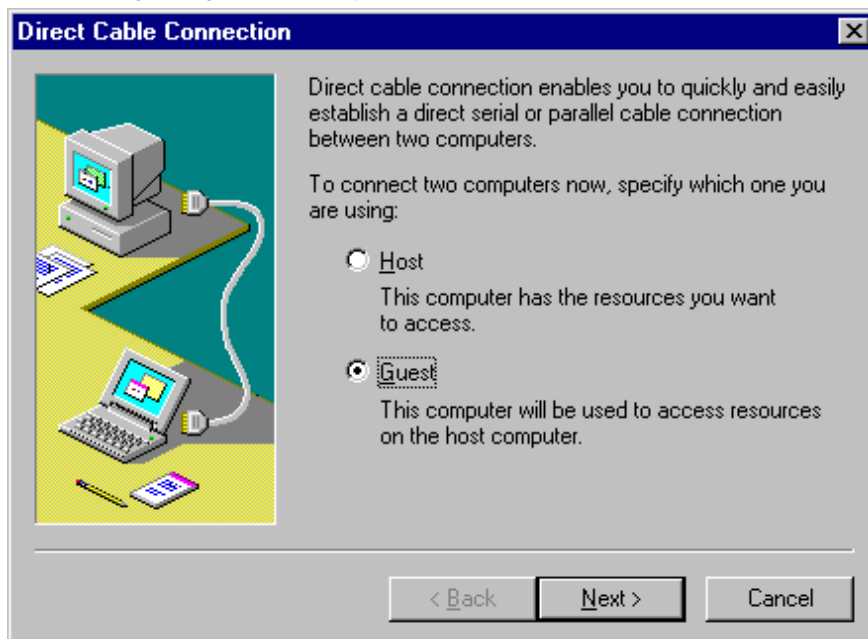
## Configuration of the direct cable connection

---

### Presentation

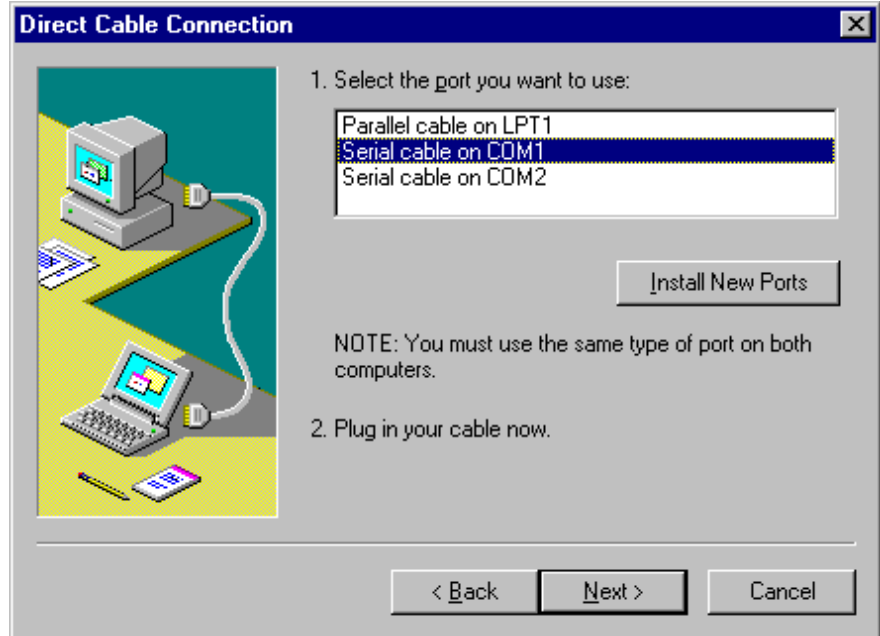
Click on "**Start**", point to "**Programs -> Accessories**", and then click on "**Direct Cable Connection**".

The following dialog box is displayed:



Check "**Guest**" and click on "**Next**".

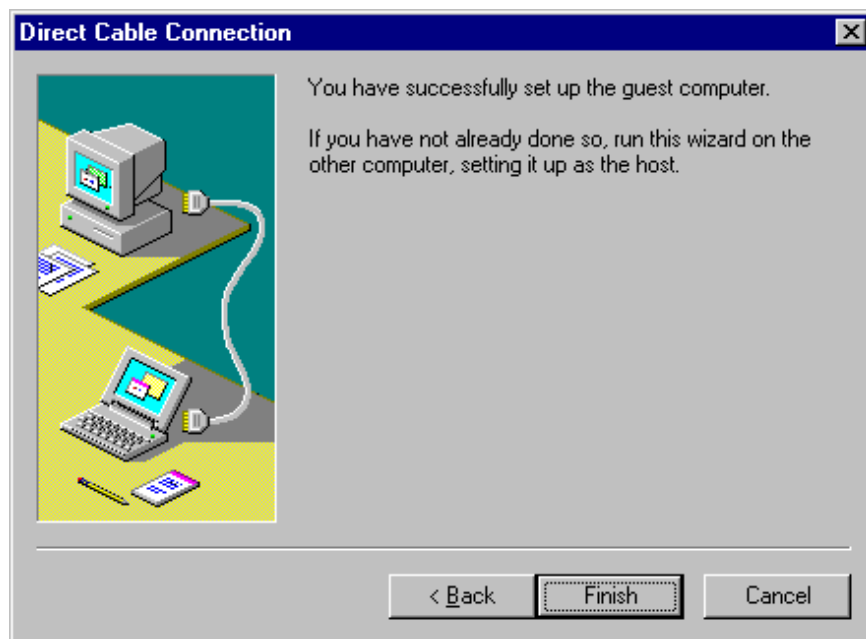
The following dialog box is displayed:



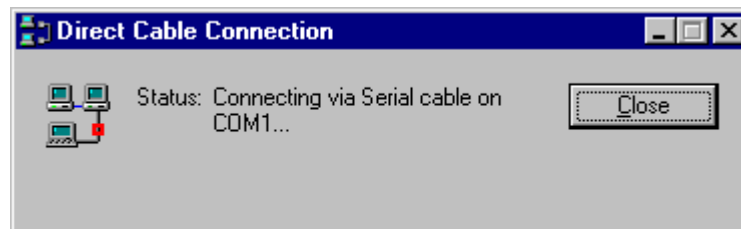
Select the serial port you want to use and click on "**Next**".

**Note:** The example is given with the communication port COM1. You can select either COM1 or another serial port on your computer.

The following dialog box is displayed:



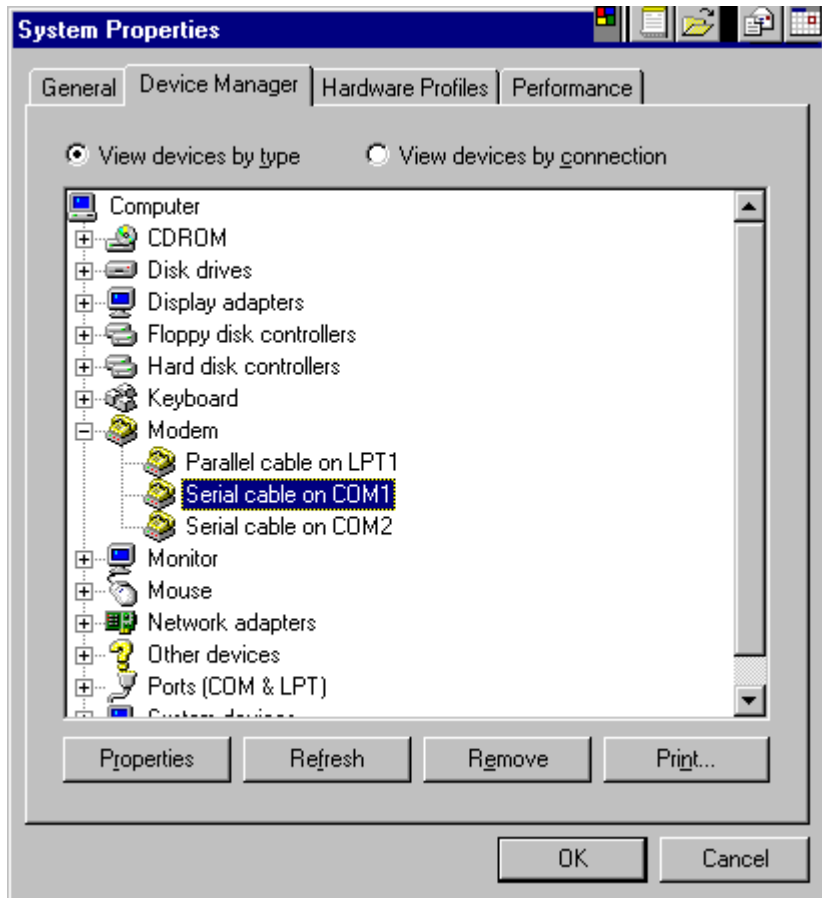
Click on "**Finish**" to complete set up.



Click on "**Close**". Before connecting, you must modify "**Serial COM1**" settings.

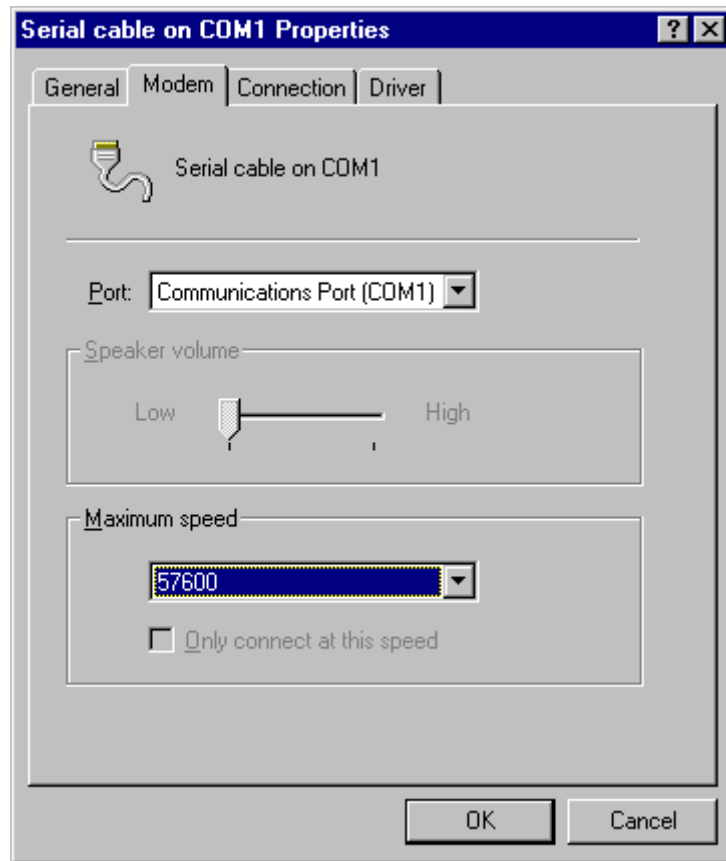
**Note:** If the connection is not closed fast enough, the user may get the message "Cannot connect to host".

Click on "**Start**", point to "**Settings**", and then click on "**Control Panel**". In the dialog box "**Control Panel**", double click on "**System**" icon. The dialog box "**System Properties**" is displayed:

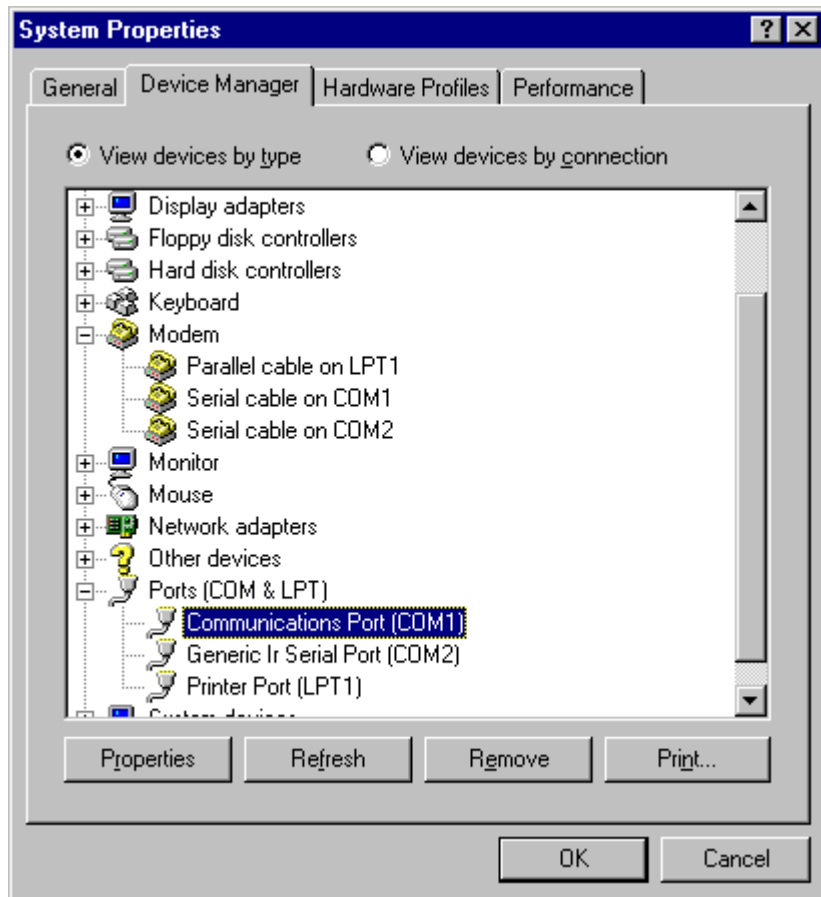


In the menu "**System properties**", select the tab "**Device manager**": click on "**modem**" and select "**Serial cable on COM1**". Then click on "**Properties**".

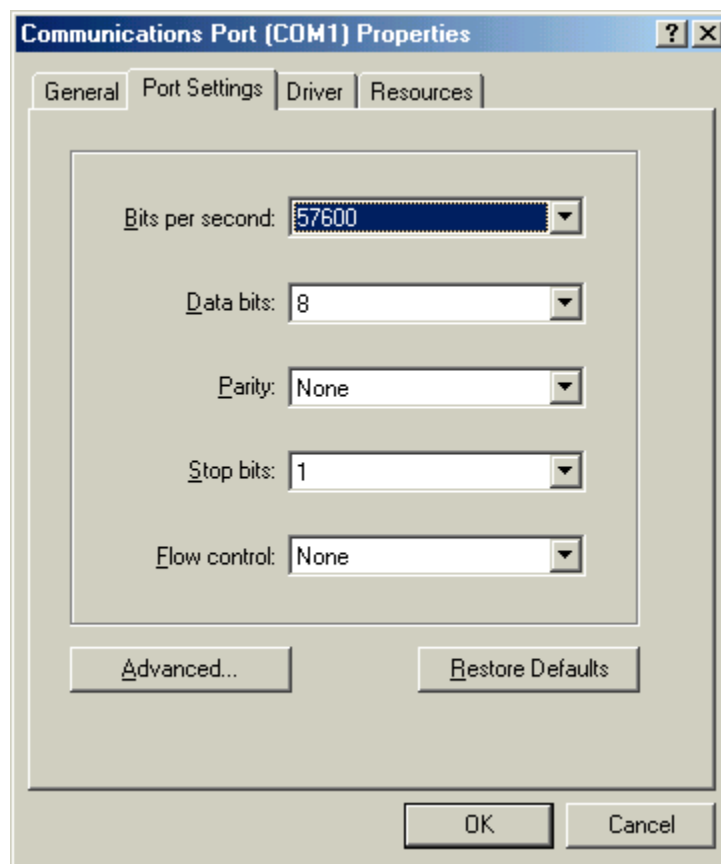
The dialog box "**Serial cable on COM1 Properties**" is displayed:



In the tab "**Modem**", select the communication port you want to use and the speed (**57600** bits per second). Then click on "**OK**" to get back to the dialog box "**System Properties**":



In the tab "**Device Manager**": click on "**Ports (COM & LPT)**" and select "**Communications Port (COM1)**". Click on "**Properties**".



Click on the tab "**Port Settings**" to adjust the speed at 57600 bits per second, 8 data bits, parity: None, 1 stop bit, Flow control: None, then click on "**OK**".

Click "**OK**" in the dialog box "**System Properties**" to complete the set up. Then close the "**Control Panel**" dialog box.

---

**Procedure to install TCP/IP Protocol on your computer**

Direct Cable Connection may not work if you are using Dial up Networking with only the Net BEUI Protocol installed. You have then to install the TCP/IP Protocol on your computer. Steps to follow:

Step	Action
1	Click the Start button, point to Settings and click Control Panel.
2	Double-click the Network icon.
3	Click the Add button.
4	Click Protocol, then click the Add button.
5	Click Microsoft.
6	Click TCP/IP Protocol.
7	Click the OK button.

**You must restart your computer before the new settings will take effect.**

---

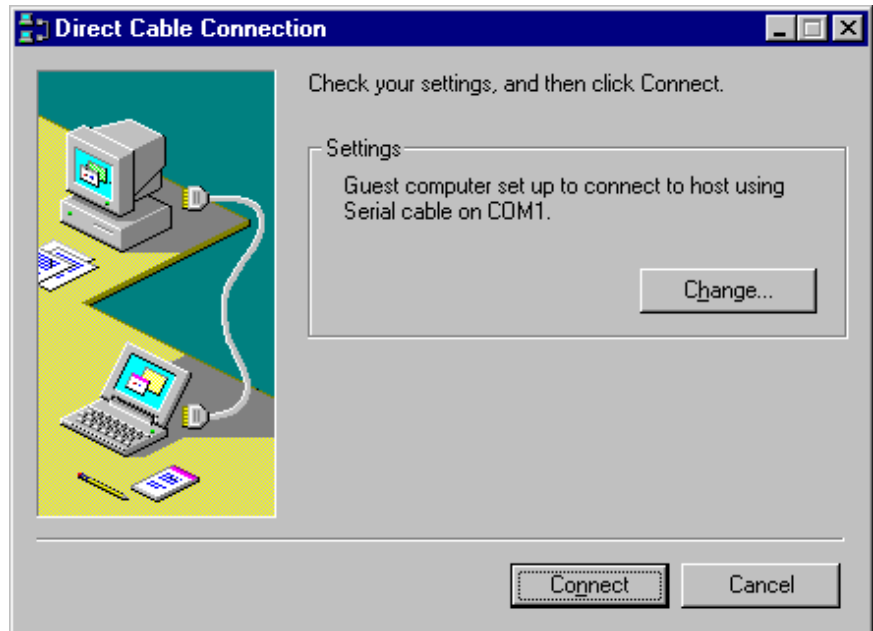
## Connection to the TSX ETZ Module with null modem

---

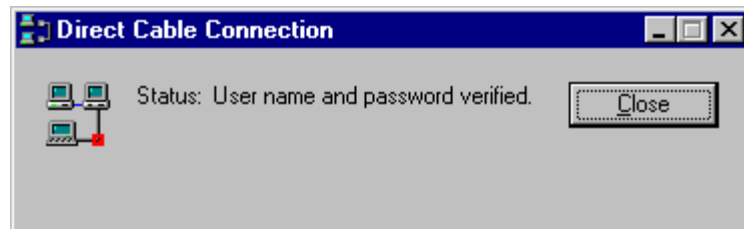
### Presentation

First, connect the null modem between the computer and the TSX ETZ Module. Click on "**Start**", point to "**Programs -> Accesories**" and then click on "**Direct Cable Connection**".

The following dialog box is displayed:

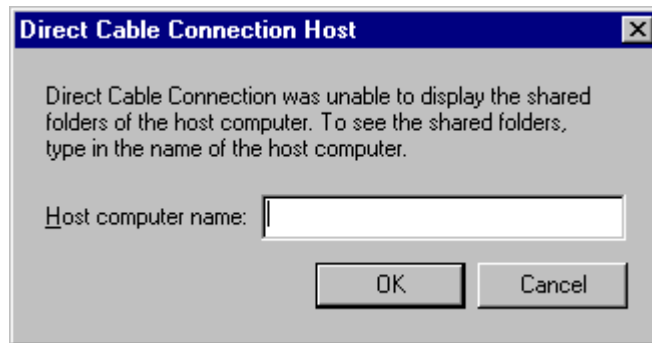


Click on "**Connect**", then the following dialog box is displayed:

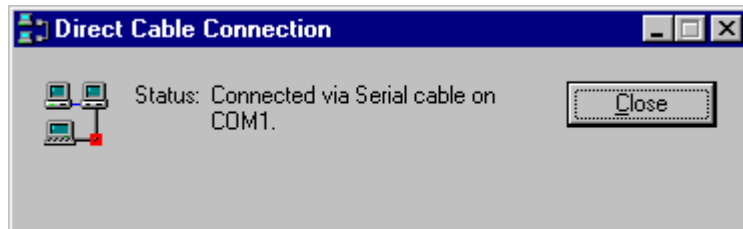


The connection may take several seconds.

Then, the dialog box is displayed:



Click on "**Cancel**" in the dialog box "**Direct Cable Connection Host**". Then the following dialog box is displayed:



You are currently connected to the TSX ETZ Module.

Open your internet browser with the IP Address **85.16.0.2** in order to access TSX ETZ http server.

Refer to the "TSX ETZ User Manual" to set up password, configure and diagnose TSX ETZ Module.

To shut down the connection, just click on "**Close**".



---

# Configuration and connection for Windows 98

# 2

---

## At a Glance

### Presentation

This non-exhaustive document is an example of your computer configuration in order to access the TSX ETZ Module http server using its serial link. Although reasonable care has been taken to provide accurate and authoritative information in this document, no responsibility is assumed by Schneider Automation for any consequences arising from the use of this document.

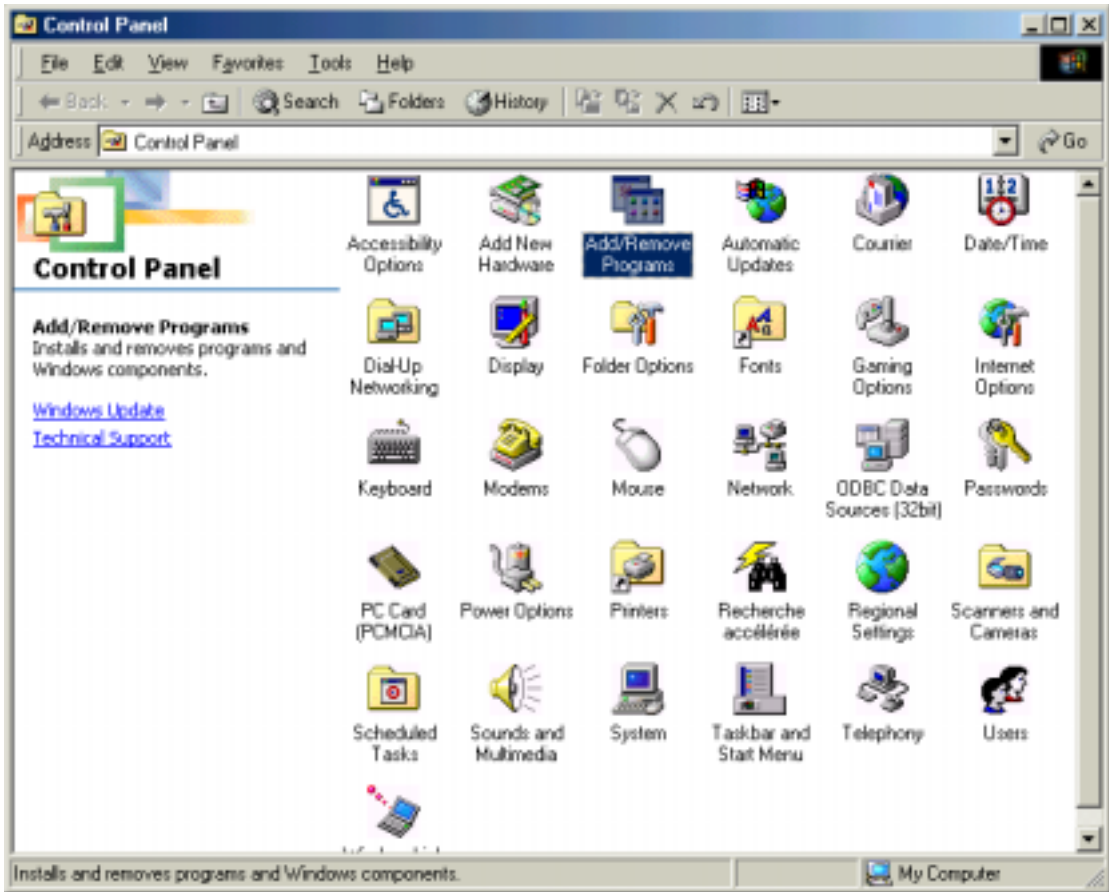
### What's in this Chapter?

This Chapter contains the following Maps:

Topic	Page
Configuration of the computer	26
Configuration of the direct cable connection	30
Connection to the TSX ETZ Module with null modem	37

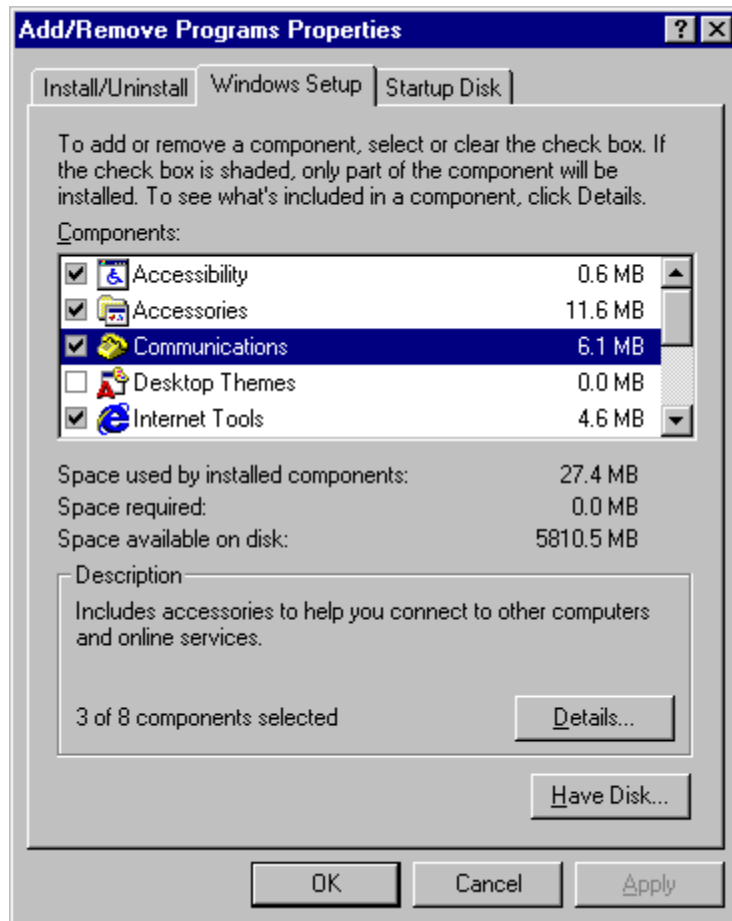
## Configuration of the computer

**Presentation** Click on "**Start**", point to "**Settings**", and then click on "**Control Panel**".  
The following dialog box is displayed:



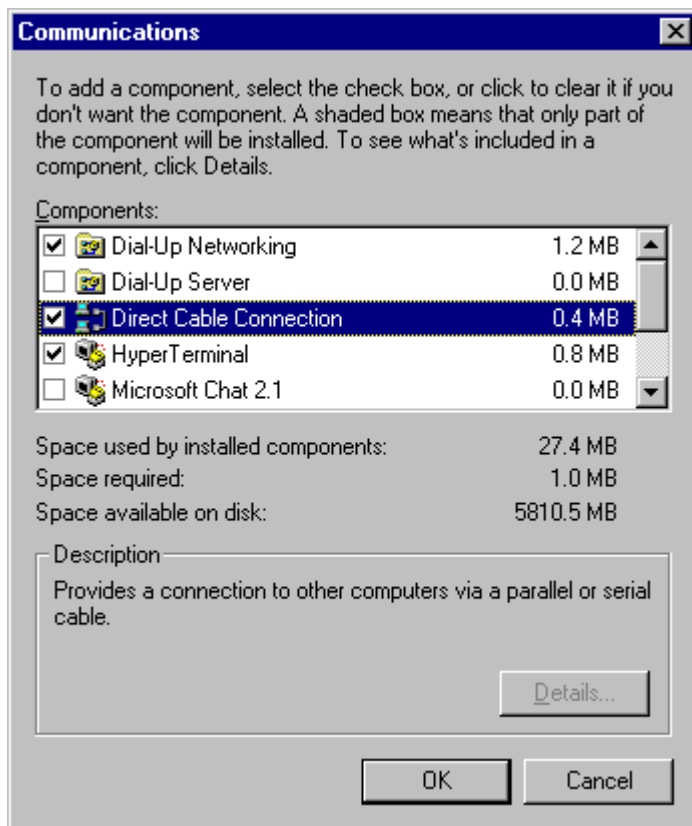
Double click on "**Add / Remove Programs**": in the menu "**Add / Remove Programs Properties**", click on the tab "**Windows Setup**".

The following dialog box is displayed:



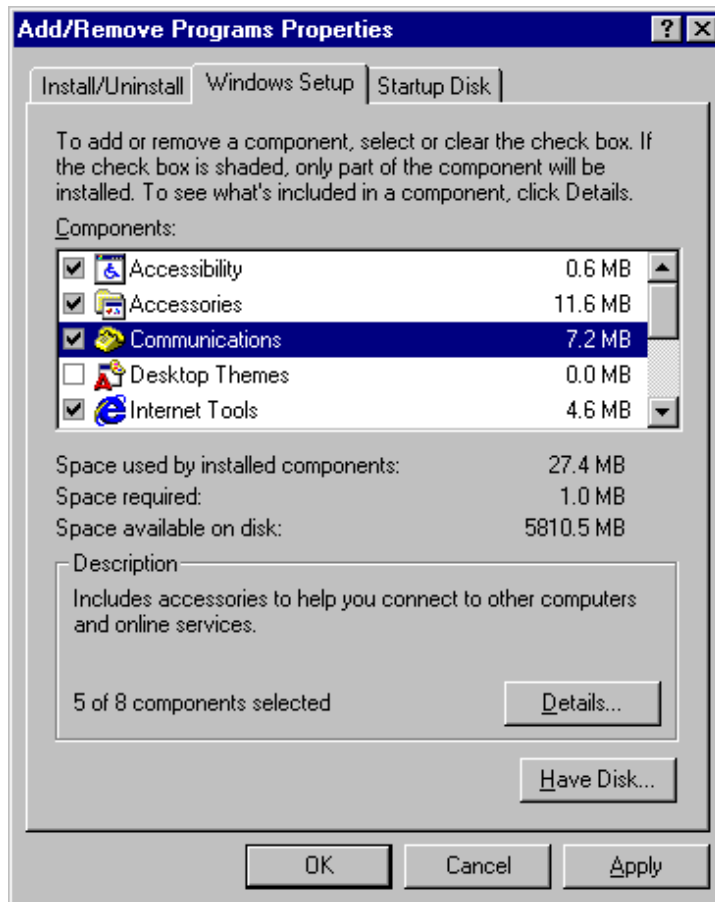
Select "**Communications**" and then click on "**Details**".

The following dialog box displayed:



Add the components "**Dial-Up Networking**" and "**Direct Cable Connection**". Then click on "**OK**".

The following dialog box displayed:



Insert the Windows 98 CD-ROM if needed and then click on "**OK**" to validate the component "**Communications**".



Click on "**OK**" to restart your computer.

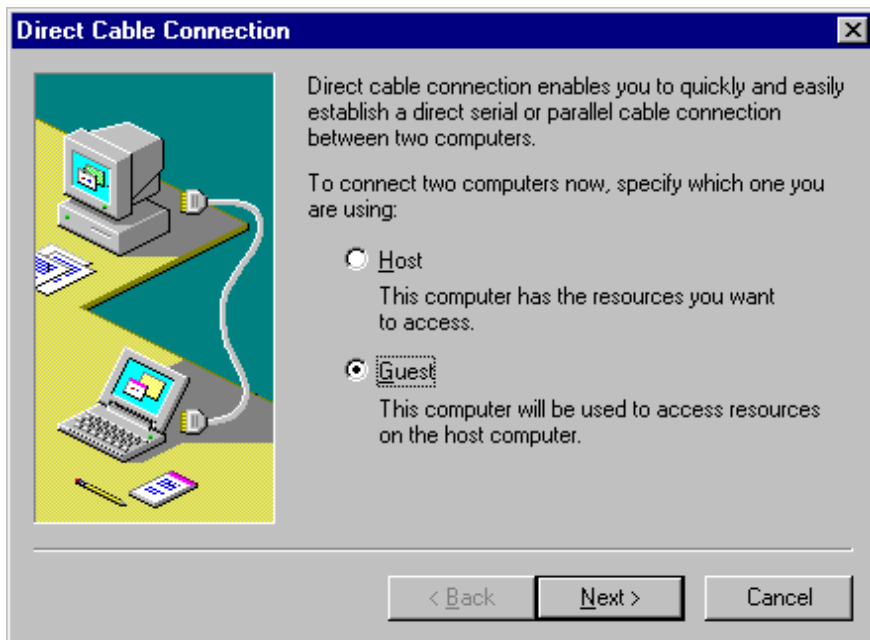
## Configuration of the direct cable connection

---

### Presentation

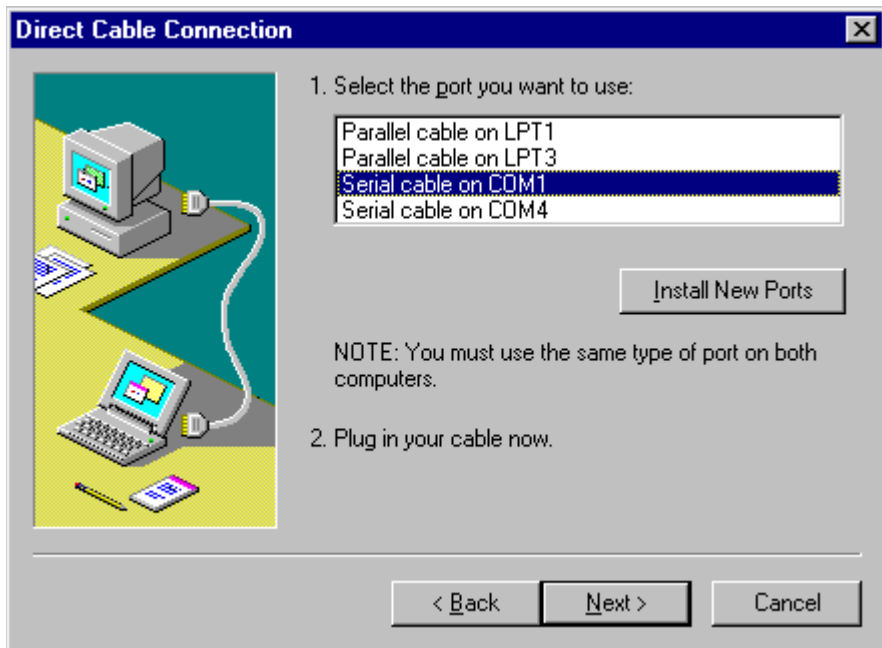
Click on "**Start**", point to "**Programs -> Accessories -> Communications**", and then click on "**Direct Cable Connection**".

The following dialog box is displayed:



Check "**Guest**" and click on "**Next**".

The following dialog box is displayed:



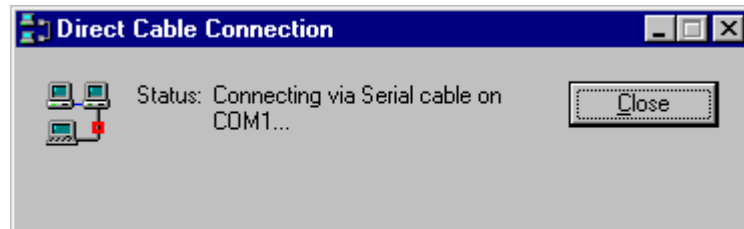
Select the serial port you want to use and click on "**Next**".

**Note:** The example is given with the communication port COM1. You can select either COM1 or another serial port on your computer.

The following dialog box is displayed:



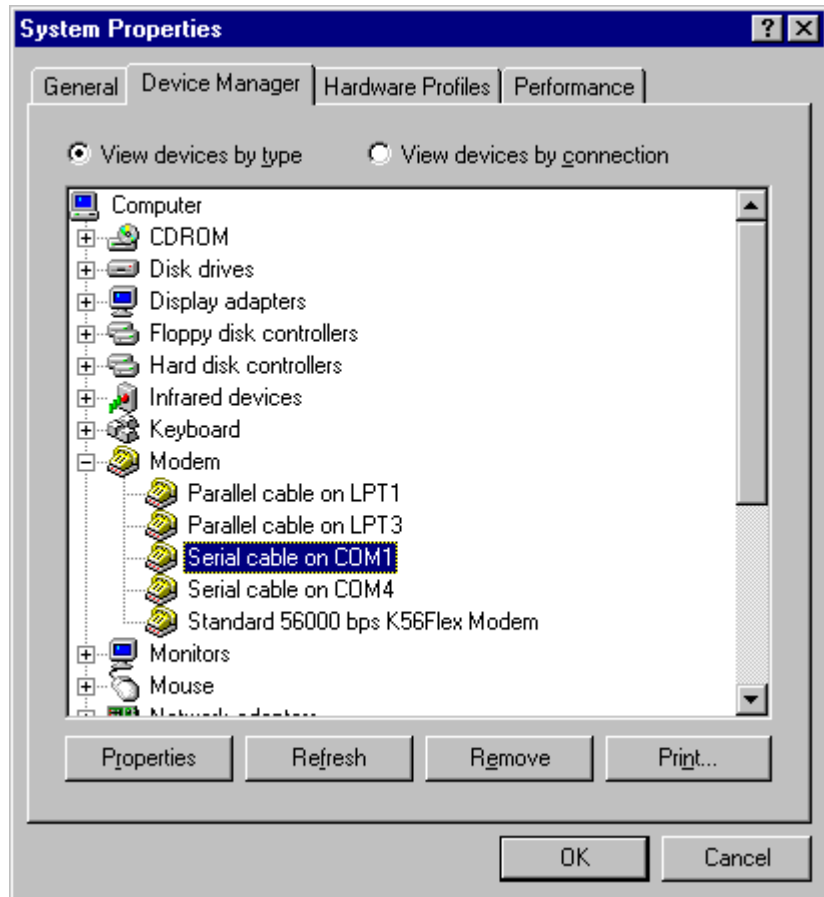
Click on "**Finish**" to complete set up.



Click on "**Close**". Before connecting, you must modify "**Serial COM1**" settings.

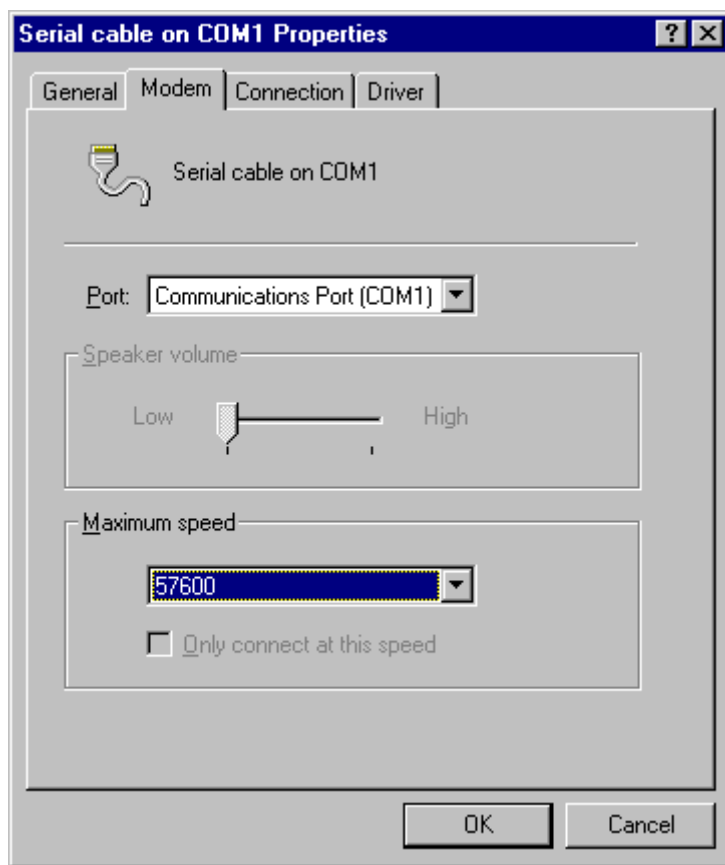
**Note:** If the connection is not closed fast enough, the user may get the message "Cannot connect to host".

Click on "**Start**", point to "**Settings**", and then click on "**Control Panel**". In the dialog box "**Control Panel**", double click on "**System**" icon. The dialog box "**System Properties**" is displayed:

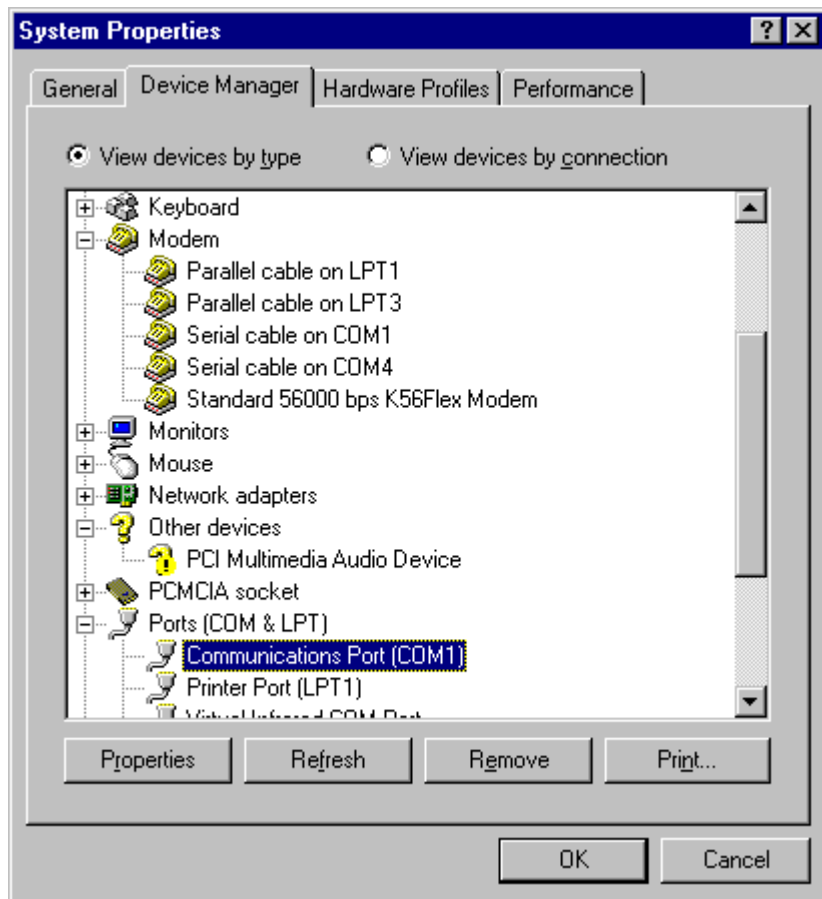


In the menu "**System Properties**", select the tab "**Device Manager**": click on "**Modem**" and select "**Serial cable on COM1**". Then click on "**Properties**".

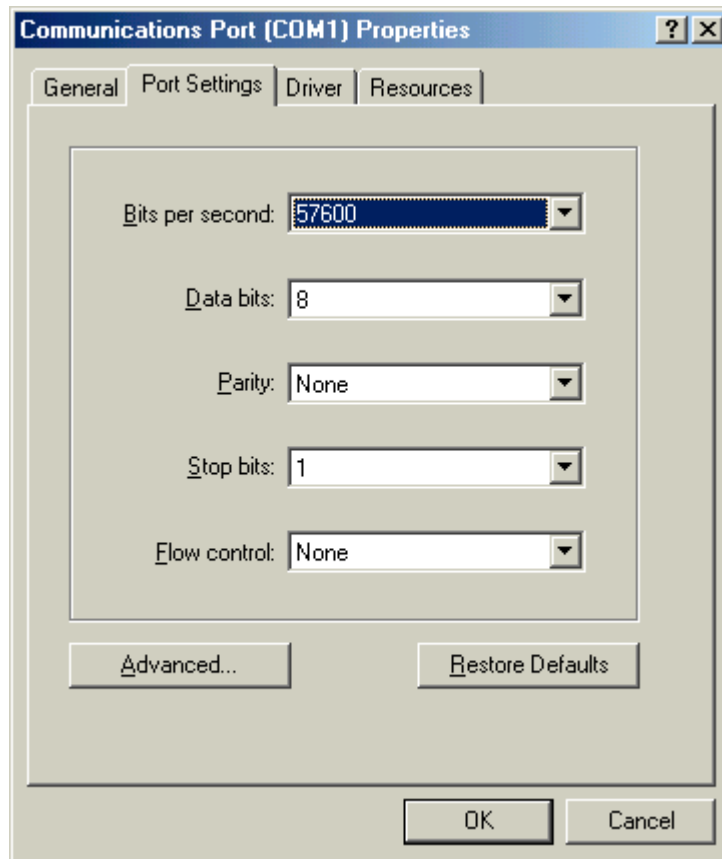
The dialog box "**Serial cable on COM1 Properties**" is displayed:



In the tab "**Modem**", select the communication port you want to use and the speed (**57600** bits per second). Then click on "**OK**" to get back to the dialog box "**System Properties**":



In the tab "Device Manager": click on "Ports (COM & LPT)" and select "Communications Port (COM1)". Click on "Properties".



Click on the tab "**Port Settings**" to adjust the speed at 57600 bits per second, 8 data bits, parity: None, 1 stop bit, Flow control: None, then click on "**OK**".

Click "**OK**" in the dialog box "**System Properties**" to complete the set up. Then close the "**Control Panel**" dialog box.

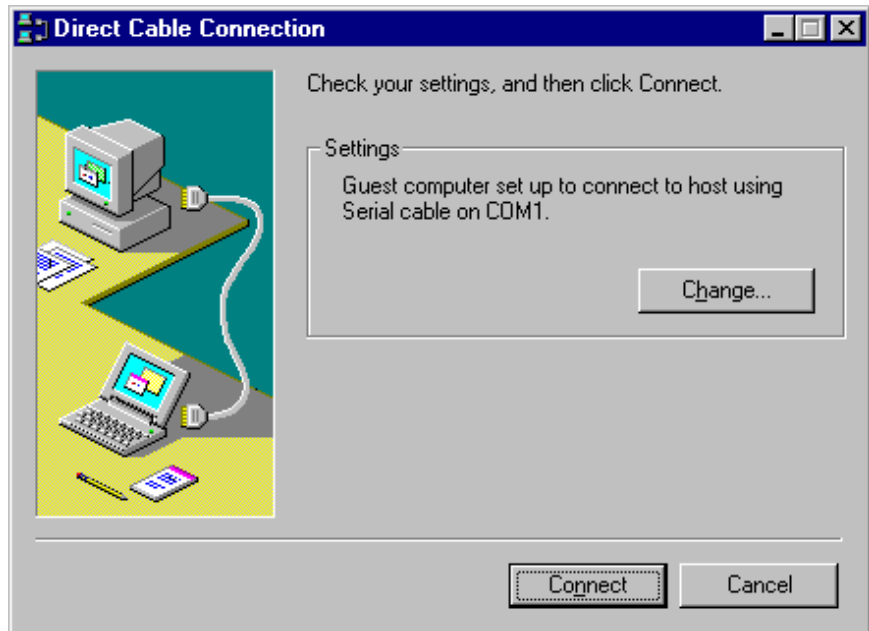
**You must restart your computer before the new settings will take effect.**

---

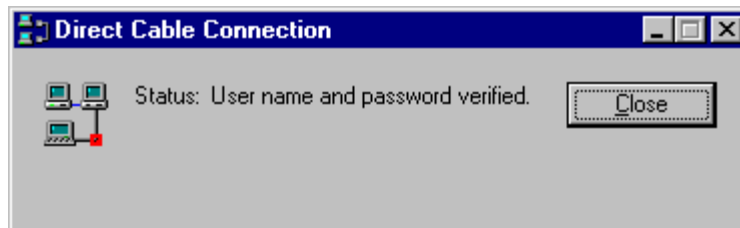
## Connection to the TSX ETZ Module with null modem

### Presentation

First, connect the null modem between the computer and the TSX ETZ Module. Click on "**Start**", point to "**Programs -> Accesories -> Communications**" and then click on "**Direct Cable Connection**". The following dialog box is displayed:

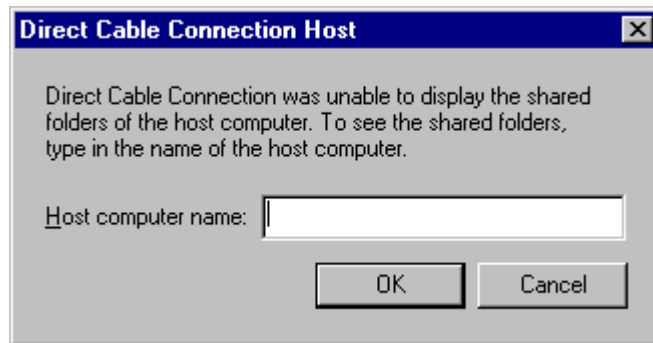


Click on "**Connect**", then the following dialog box is displayed:

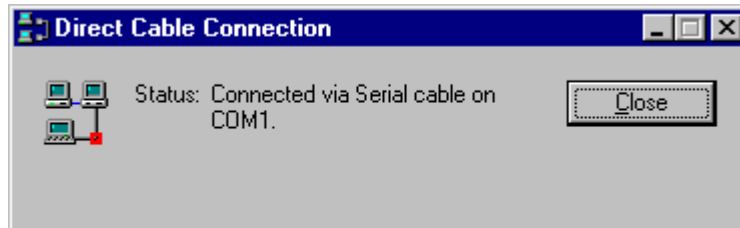


The connection may take several seconds.

Then, the dialog box is displayed:



Click on "**Cancel**" in the dialog box "**Direct Cable Connection Host**".  
Then the following dialog box is displayed:



You are currently connected to the TSX ETZ Module.  
Open your internet browser with the IP Address **85.16.0.2** in order to access TSX ETZ http server.  
Refer to the "TSX ETZ User Manual" to set up password, configure and diagnose TSX ETZ Module.  
To shut down the connection, just click on "**Close**".

---

---

# Configuration and connection for Windows 2000

# 3

---

## At a Glance

### Presentation

This non-exhaustive document is an example of your computer configuration in order to access the TSX ETZ Module http server using its serial link. Although reasonable care has been taken to provide accurate and authoritative information in this document, no responsibility is assumed by Schneider Automation for any consequences arising from the use of this document.

### What's in this Chapter?

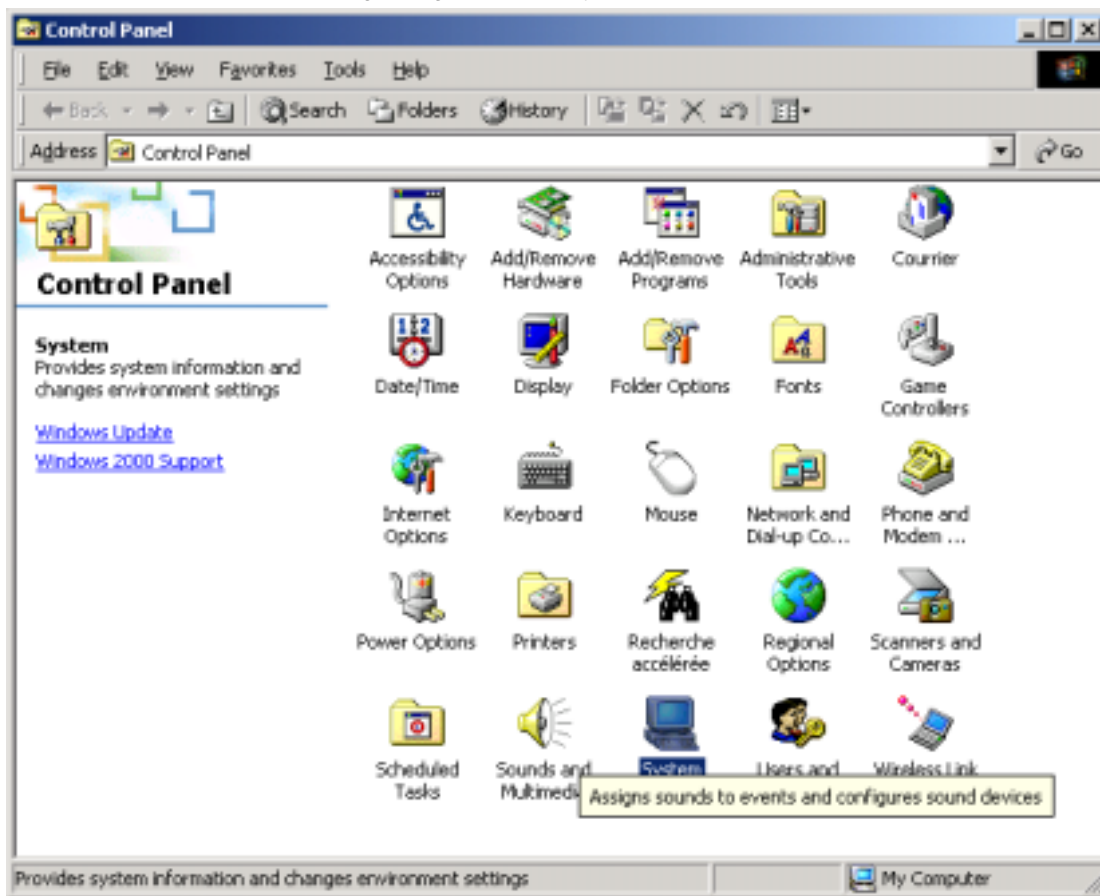
This Chapter contains the following Maps:

Topic	Page
Configuration of the computer	40
Configuration of the Dial-Up Networking	46
Connection to the TSX ETZ Module with null modem	61

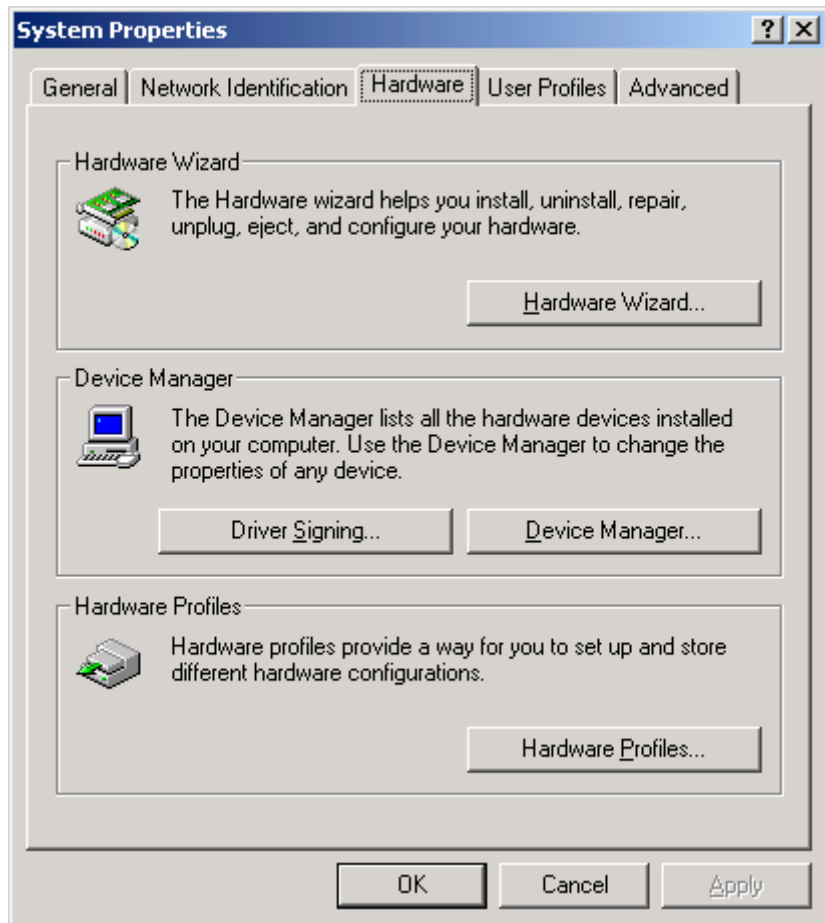
## Configuration of the computer

### Presentation

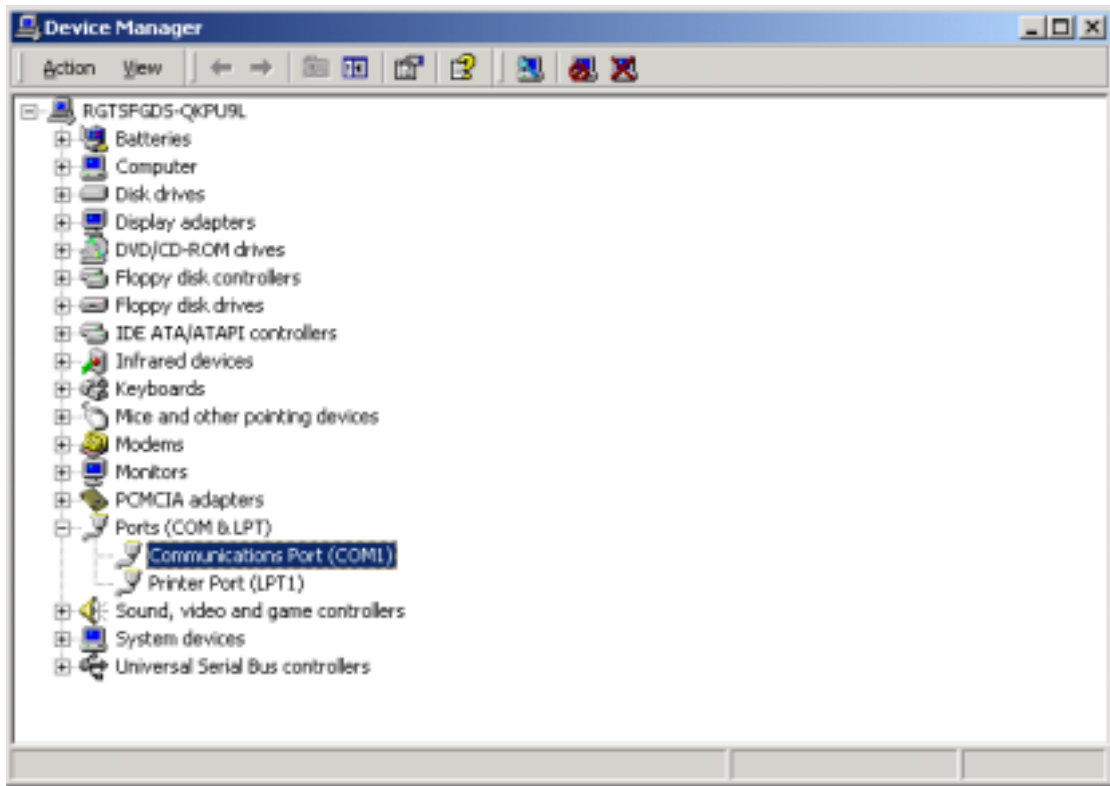
Click on "**Start**", point to "**Settings**", and then click on "**Control Panel**".  
The following dialog box is displayed:



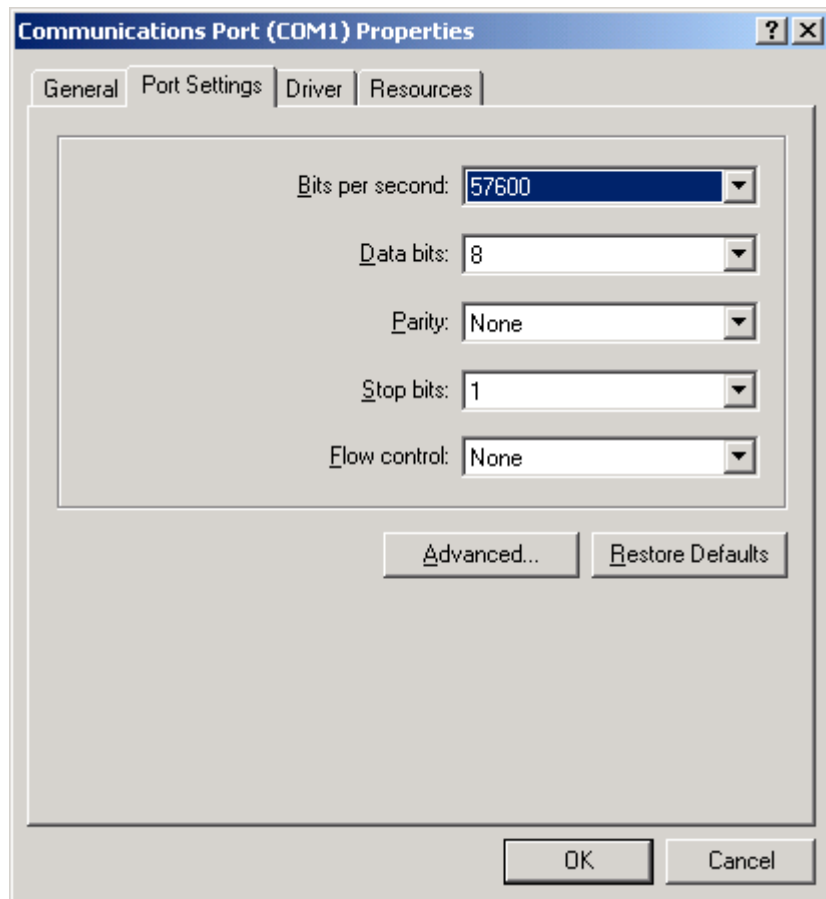
Double click on the "**System**" icon:



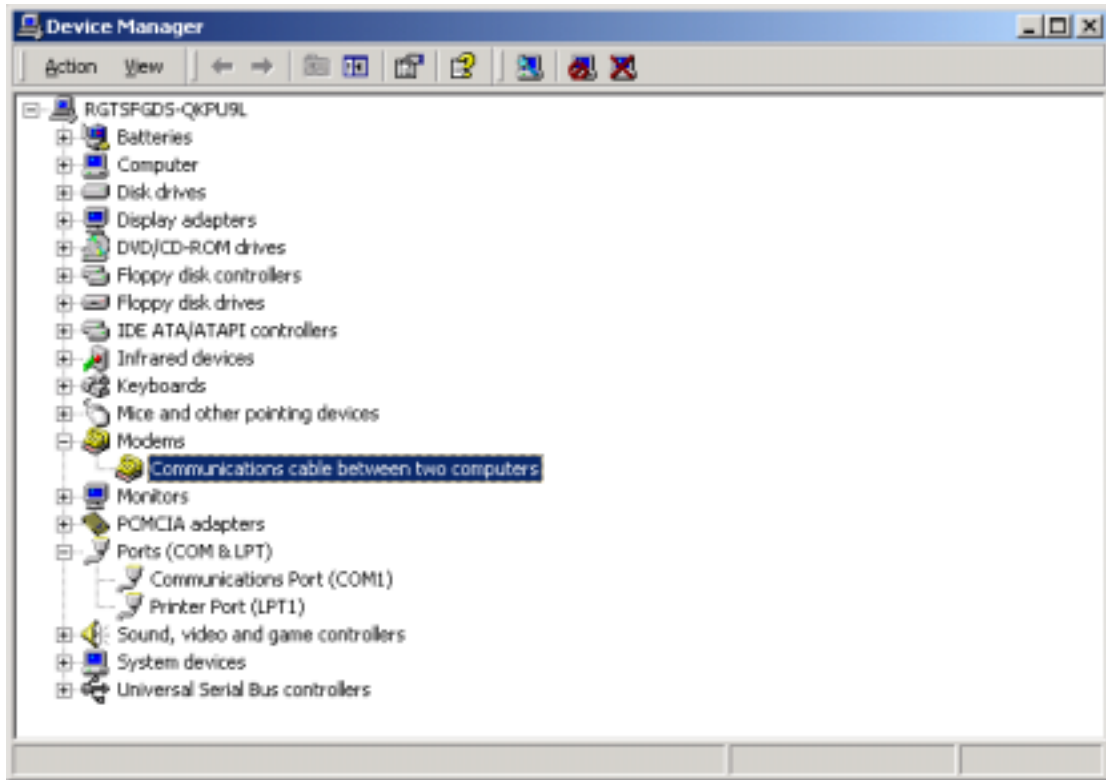
On the tab "**Hardware**": click on "**Device Manager**".



Click on "**Port (COM & LPT)**" and then double click on "**Communications Port (COM1)**".

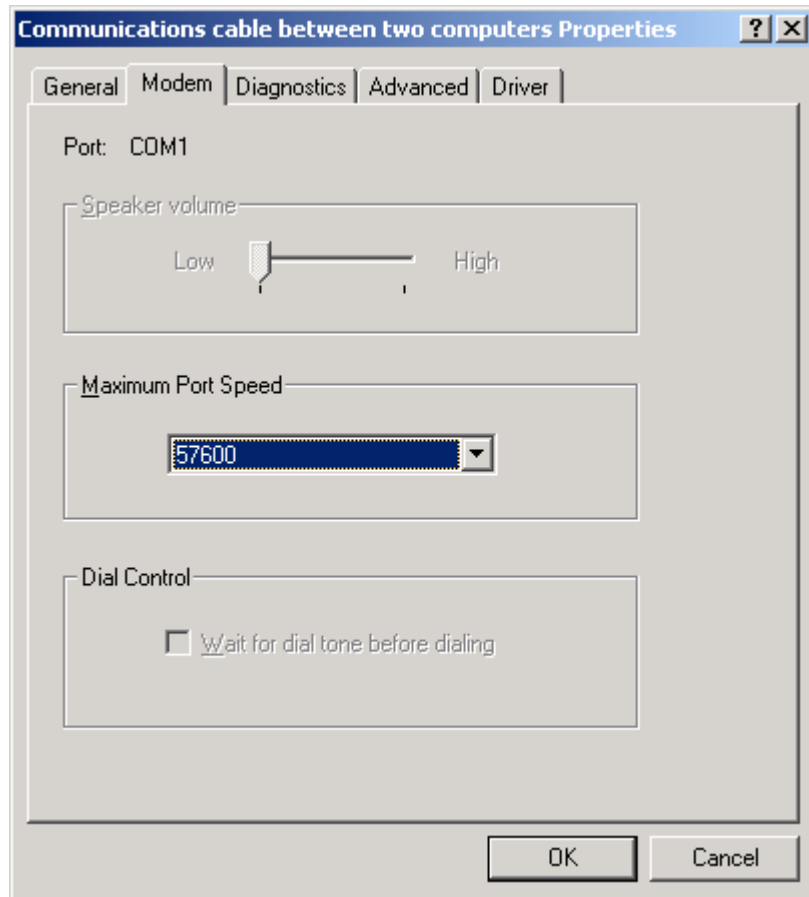


Click on the tab "**Port Settings**" to adjust the speed at 57600 bits per second, 8 data bits, parity: None, 1 stop bit, Flow control: None. Then click "**OK**".



Back to the menu "**Device Manager**": click on "**Modem**" and then double click on "**Communications cable between two computers**".

The dialog box "**Communications cable between two computers Properties**" is displayed:

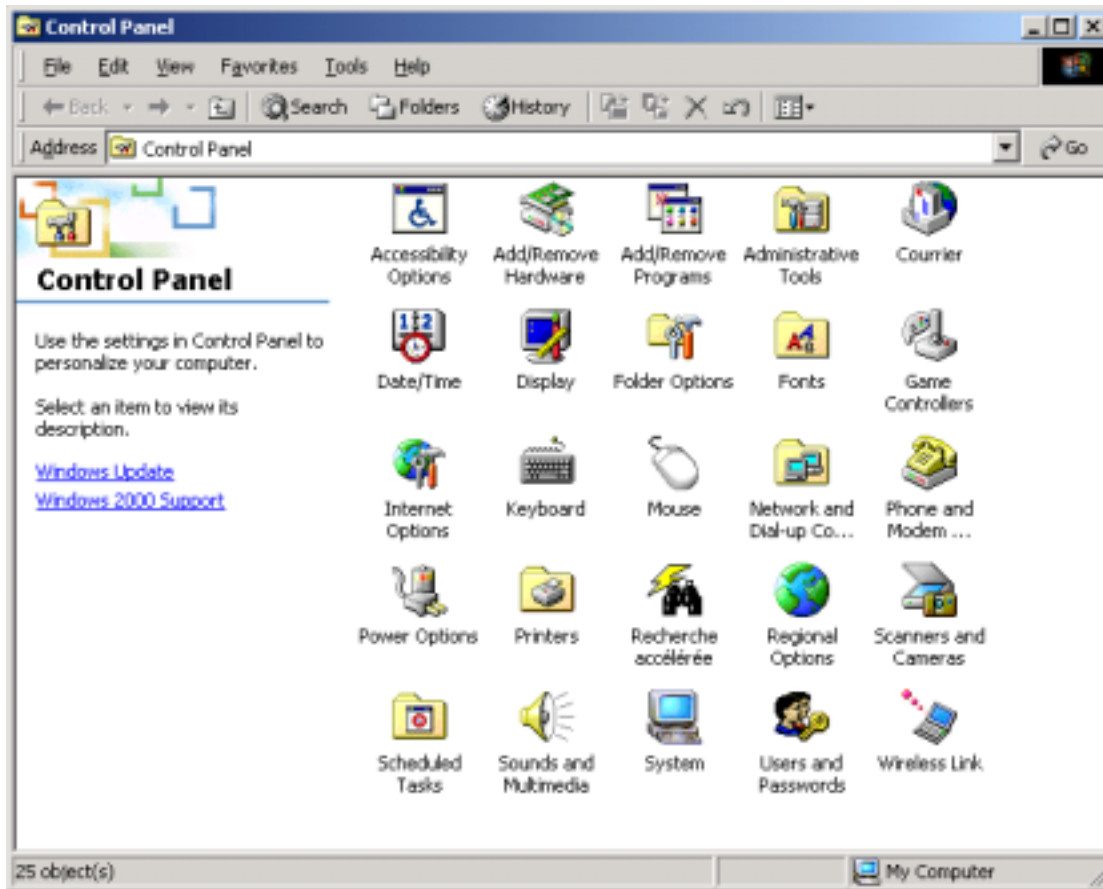


Select the maximum speed (57600 bits per second).

Then click on "OK" to get back to the dialog box "**Device Manager**": close this dialog box and click on "OK" in the dialog box "**System Properties**":

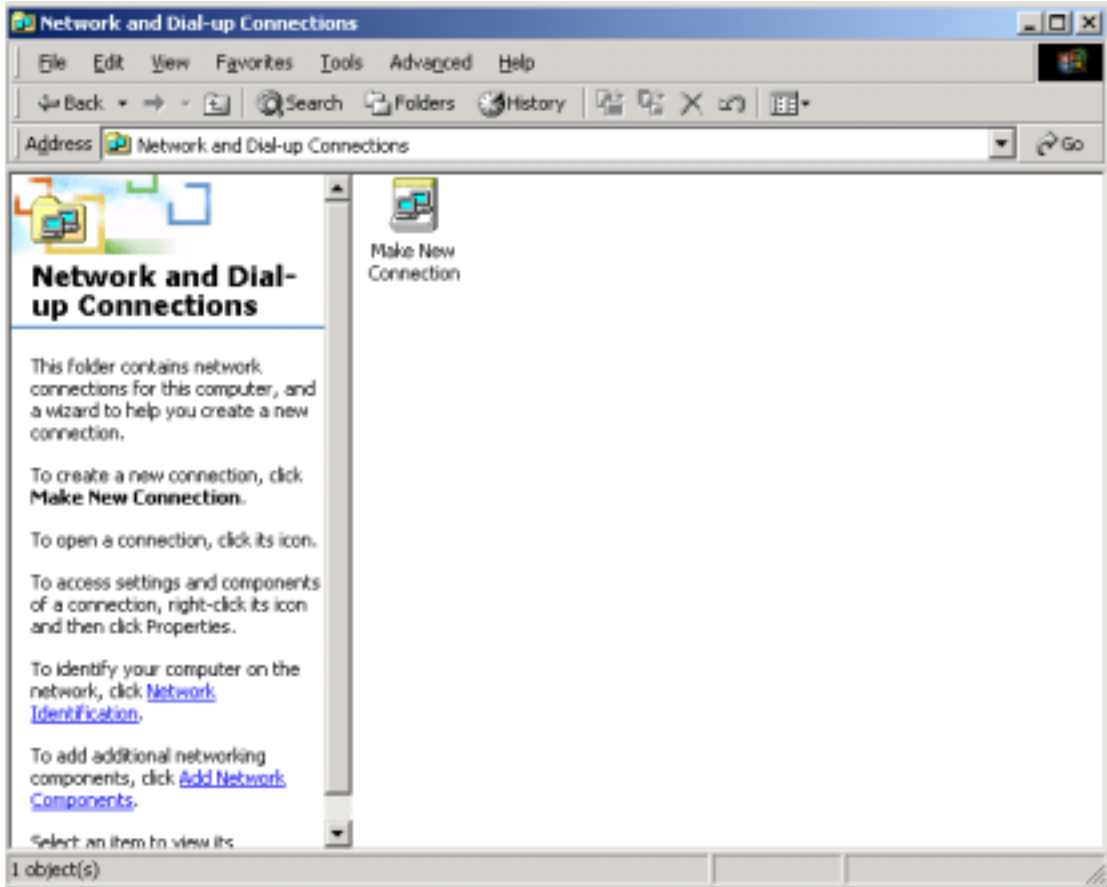
## Configuration of the Dial-Up Networking

**Presentation** Click on "**Start**", point to "**Settings**", and then click on "**Control Panel**":



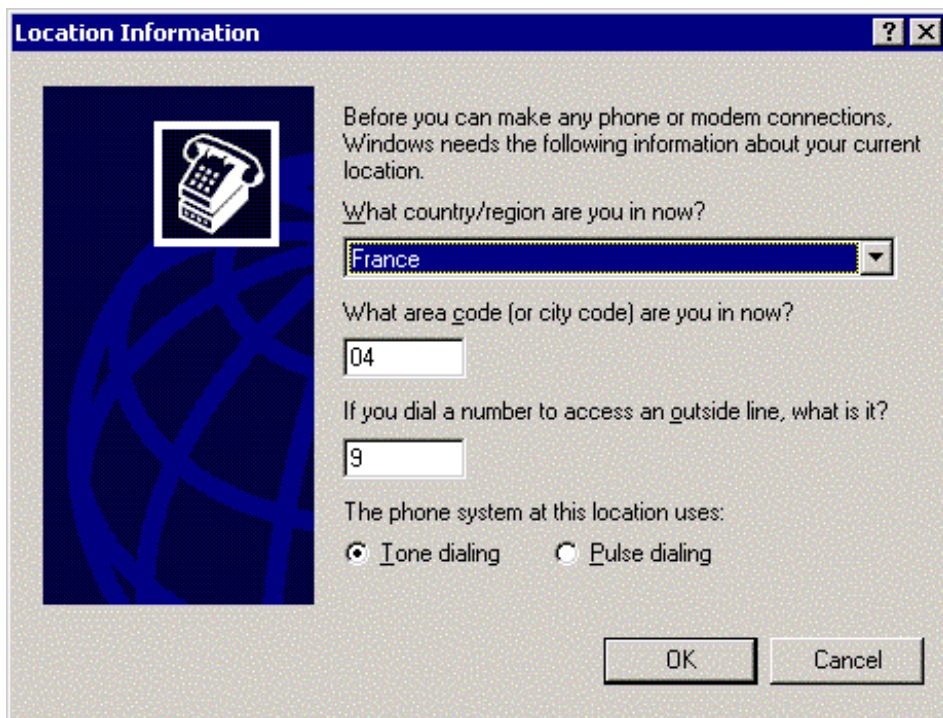
Double click on the "**Network and Dial-up Connections**" icon.

The following dialog box is displayed:



Double click on "**Make New Connection**" icon.

The dialog box "**Location Information**" may be displayed:



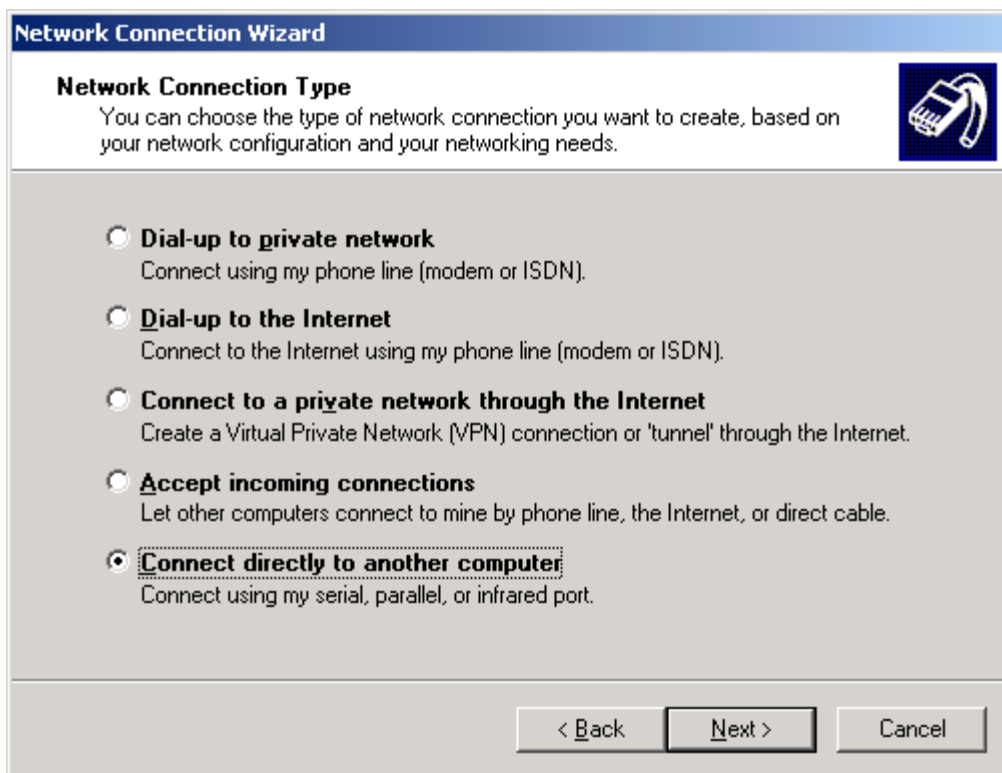
Fill the area code and the phone number and then click "OK". Then, click on "OK" in the dialog box "**Phone and Modem Options**".

The "Network Connection Wizard" dialog box is displayed:

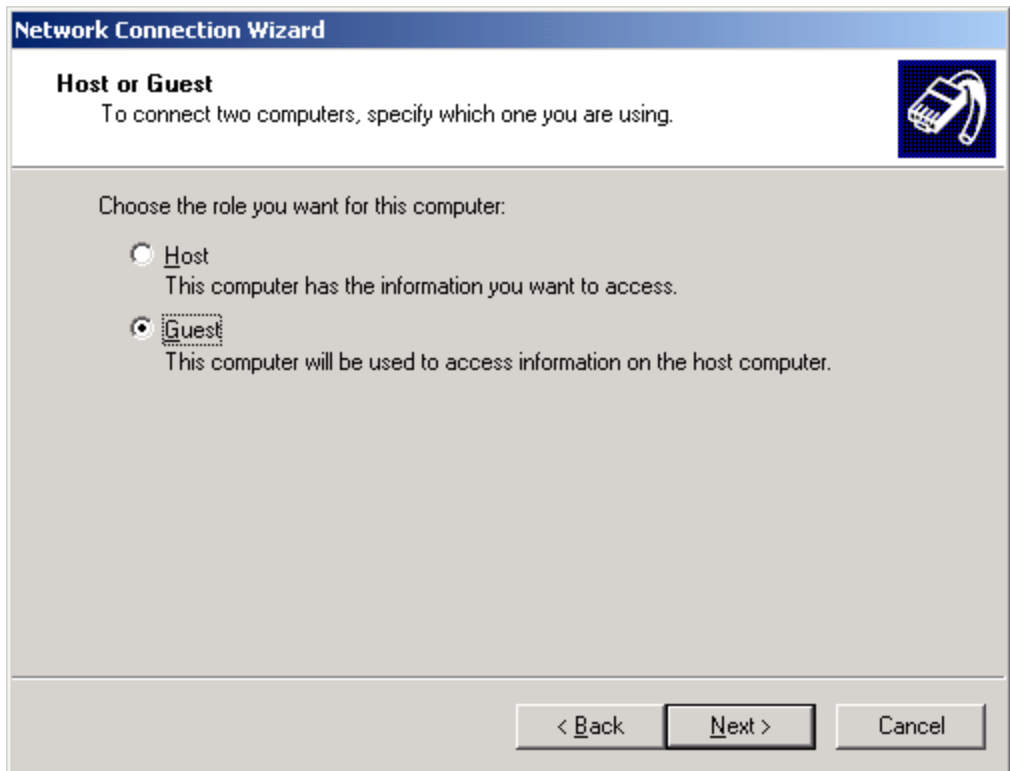


Click on "Next".

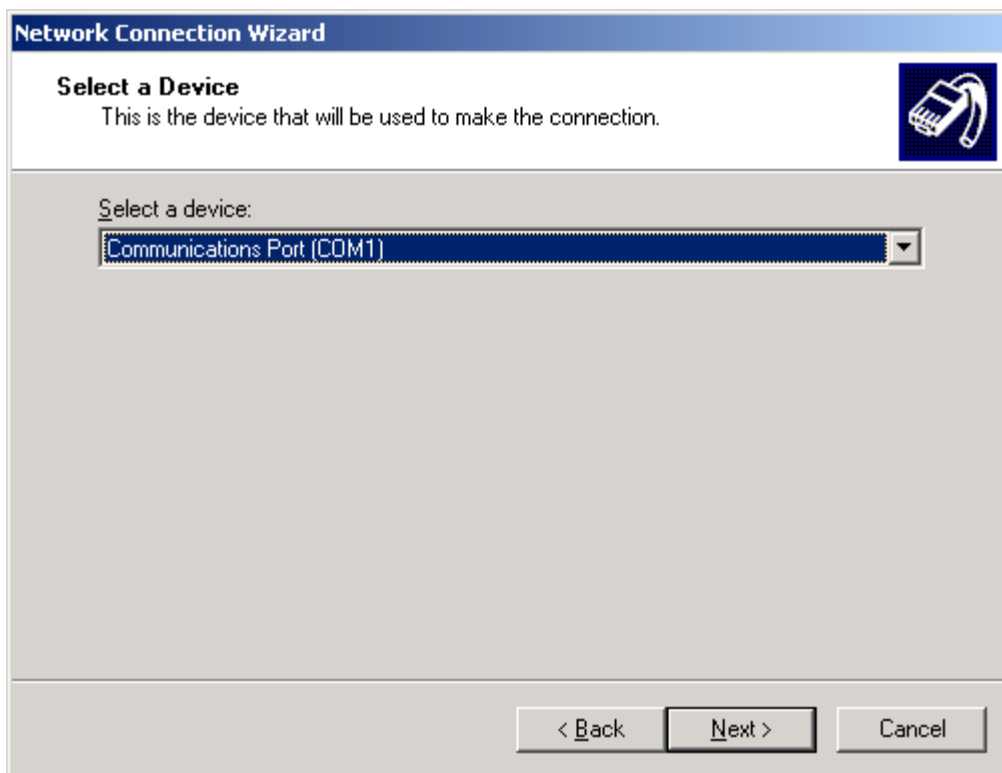
The following dialog box is displayed:



Select "Connect directly to another computer" and then click on "Next".

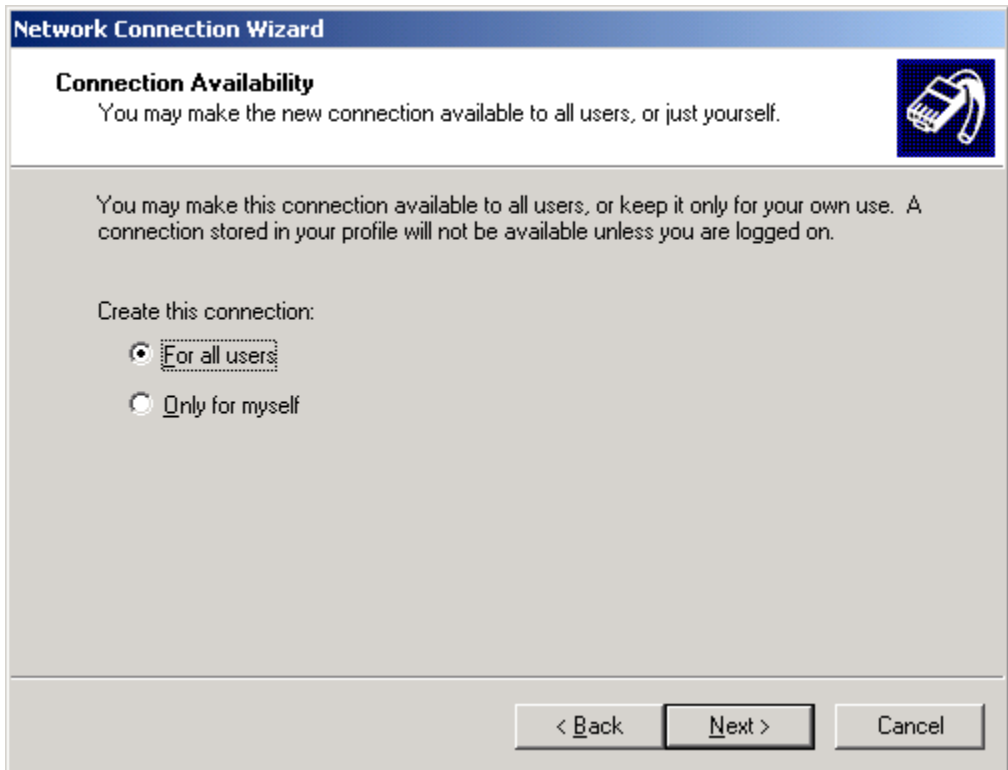


Check "**Guest**" and click on "**Next**".



**Note:** The example is given with the communication port COM1. You can select either COM1 or another serial port on your computer.

Select the communication port you want to use for Direct Cable Connection and click "Next".



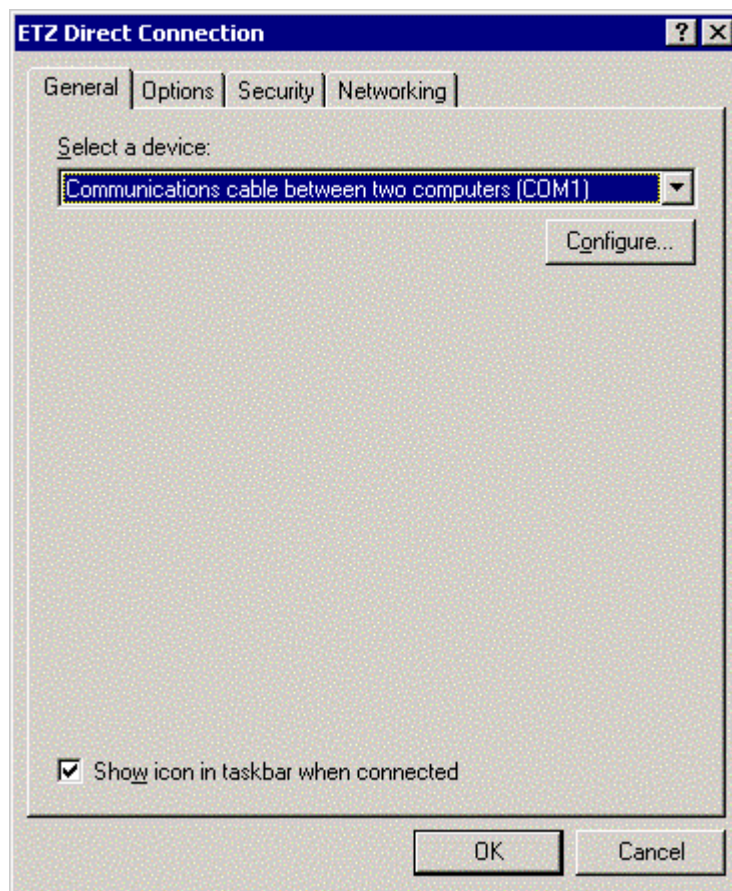
Select if you want to make the connection available for "all users" or only for "you" and then click on "**Next**".



Type the name of the connection for TSX ETZ Module and click on "**Finish**".

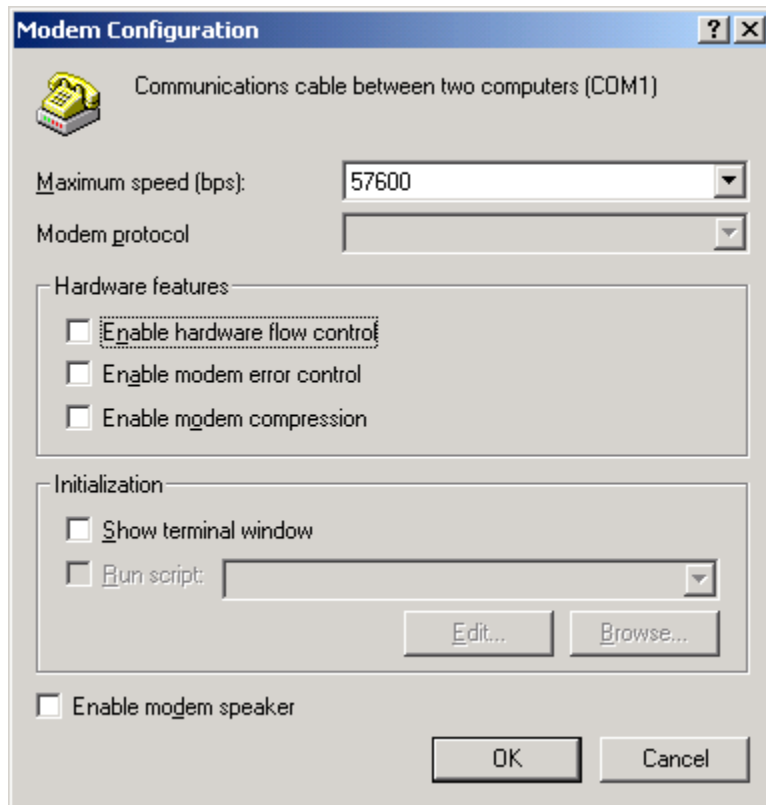


In the connection dialog box "**Connect ETZ Direct Connection**":  
Type "**User name**" and "**Password**" corresponding to the TSX http Server (Default values on the TSX ETZ are **USER** for User name and **USER** for Password).  
Then click on "**Properties**" to configure the connection:



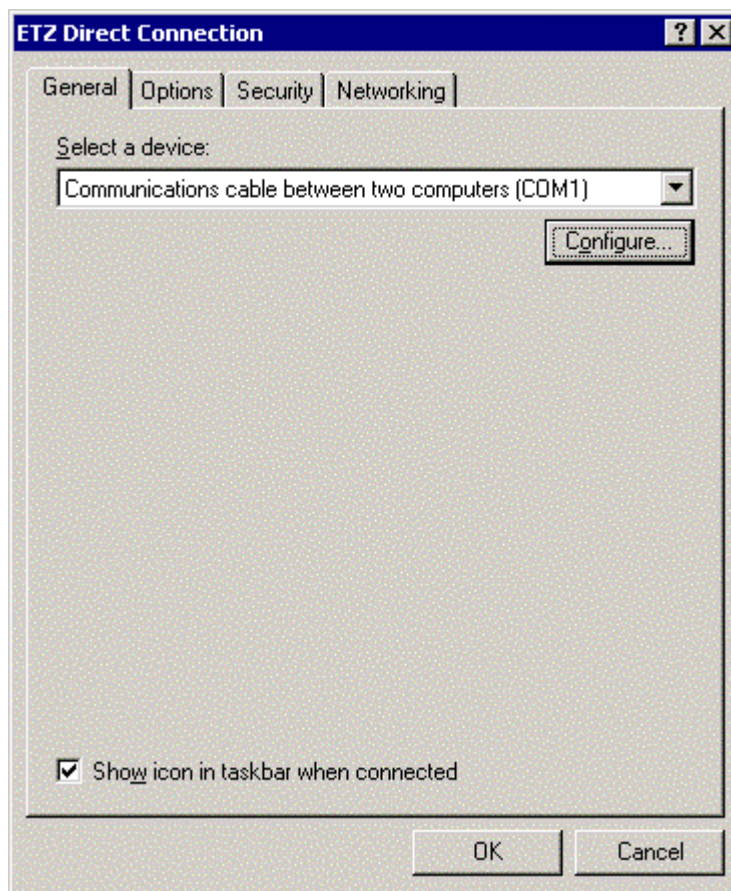
In the menu "**General**", select the communication port used: serial port **COM1** here. Once the device selected, click on "**Configure**" in the same dialog box.

Then, the dialog box is displayed:



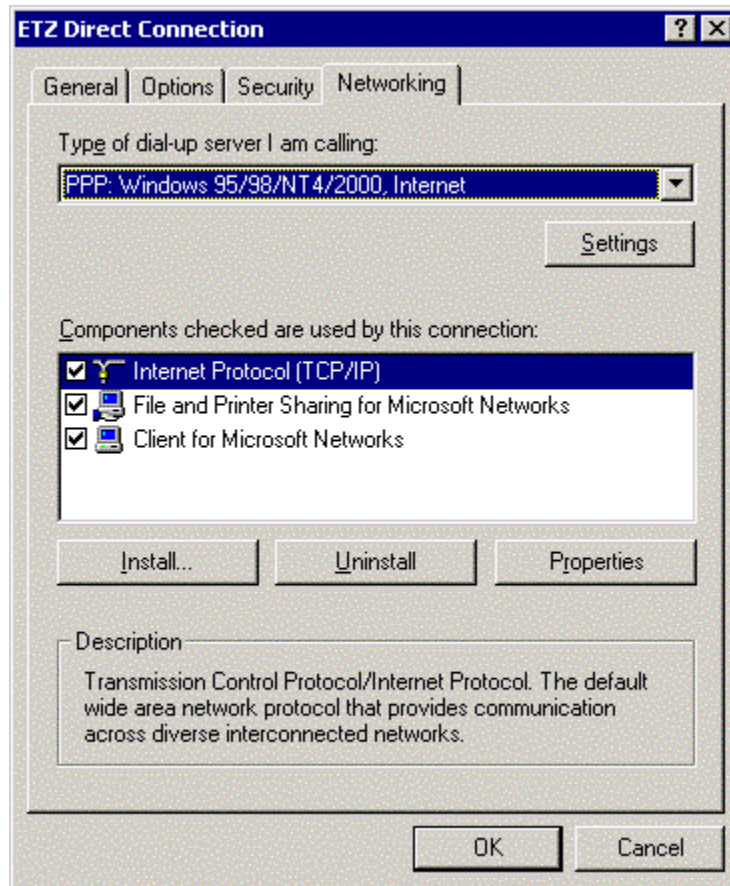
Adjust the maximum speed at 57600 bits per second.  
Check Parameters as described above and then click on "OK".

The configuration dialog box is displayed again:



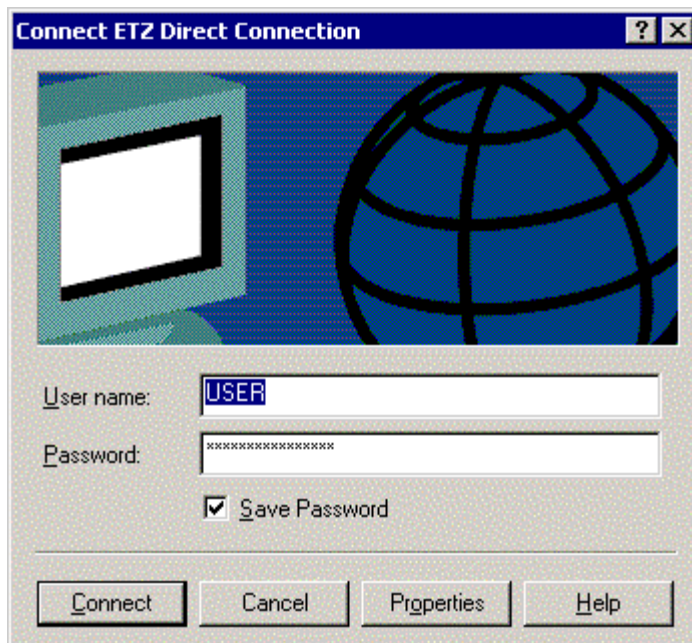
Select the menu "**Networking**".

The "ETZ Direct Connection" dialog box is displayed:



Select the dial-up server "**PPP for windows 95/98/2000/NT4, Internet**" and the Network protocol "**TCP/IP**".  
Click then on "**OK**".

The connection dialog box is displayed again:



The set up of the Direct Cable Connection is now complete, even if you close the previous dialog box.

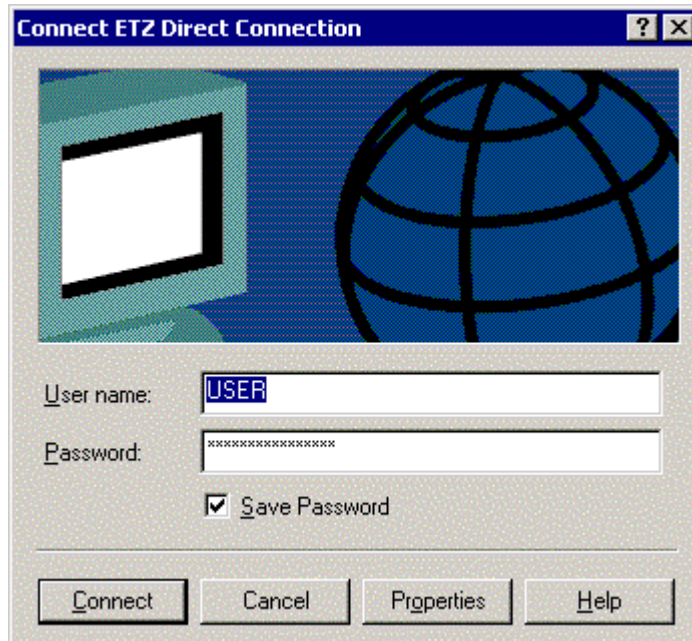
---

## Connection to the TSX ETZ Module with null modem

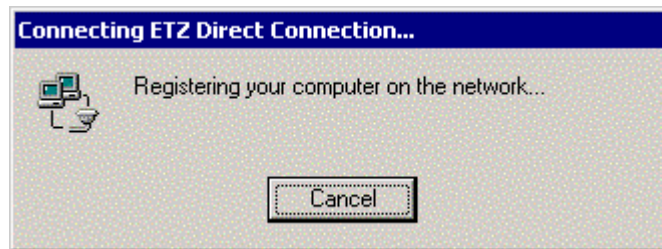
### Presentation

First, connect the null modem between the computer and the TSX ETZ Module. Click on "**Start**", point to "**Settings -> Network and Dial-up Connection**" and then click on "**Connect ETZ Direct Connection**".

The "**Connect ETZ Direct Connection**" dialog box is displayed:



Click on "**Connect**": two dialog boxes are displayed:



You are then connected to the TSX ETZ Module.

Open your internet browser with the IP Address **85.16.0.2** in order to access TSX ETZ http server.

Refer to the "TSX ETZ User Manual" to set up password, configure and diagnose TSX ETZ Module.

To shut down the connection or check the status of the connection, right click its icon in the network connections folder, or click its icon on the taskbar (if present).

---

---

# Configuration and connection for Windows NT4



---

## At a Glance

### Presentation

This non-exhaustive document is an example of your computer configuration in order to access the TSX ETZ Module http server using its serial link. Although reasonable care has been taken to provide accurate and authoritative information in this document, no responsibility is assumed by Schneider Automation for any consequences arising from the use of this document.

### What's in this Chapter?

This Chapter contains the following Maps:

Topic	Page
Configuration of the computer	64
Configuration of the Dial-Up Networking	74
Connection to the TSX ETZ Module with null modem	80

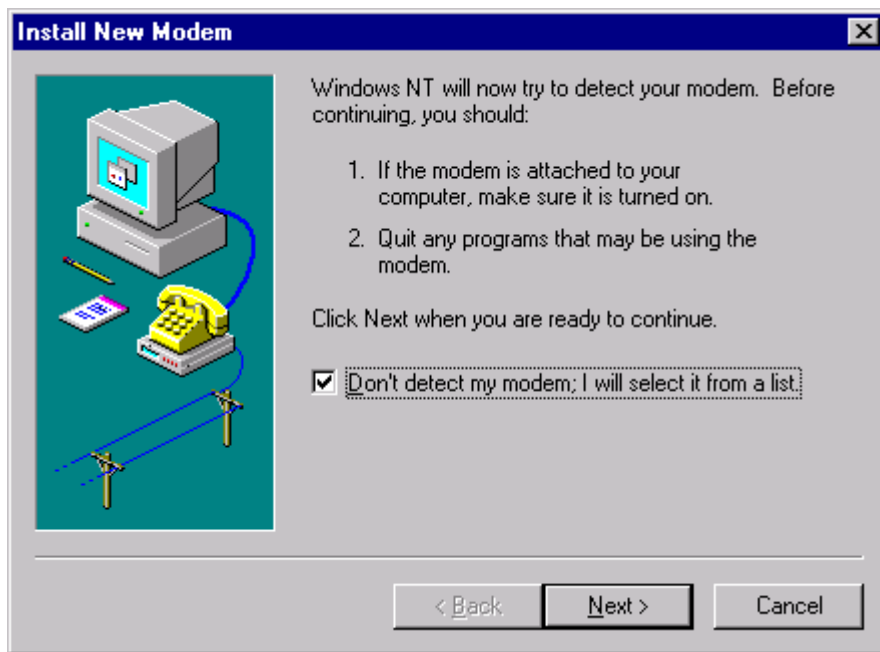
## Configuration of the computer

---

### Presentation

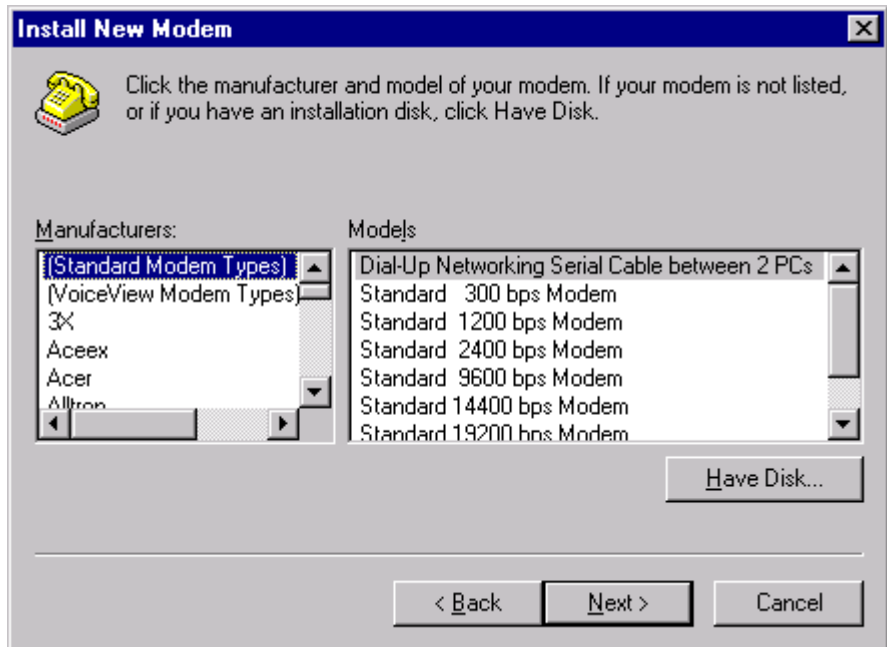
Click on "**Start**", point to "**Settings**", and then click on "**Control Panel**". Double click on "**Modems**" icon.

The following dialog box is displayed:

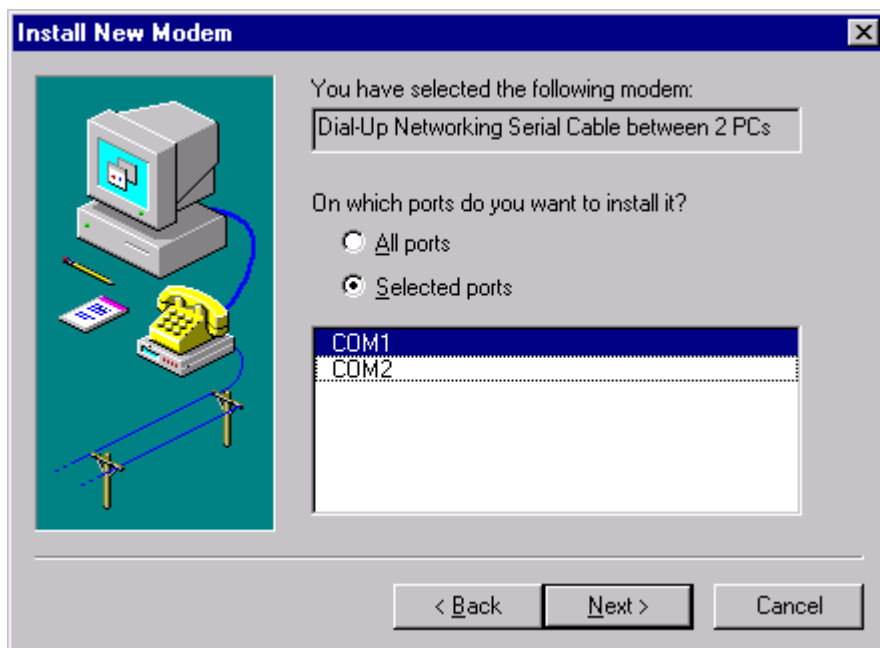


Check "**Don't detect my modem; I will select it from a list**", and then click on "**Next**".

The following dialog box is displayed:

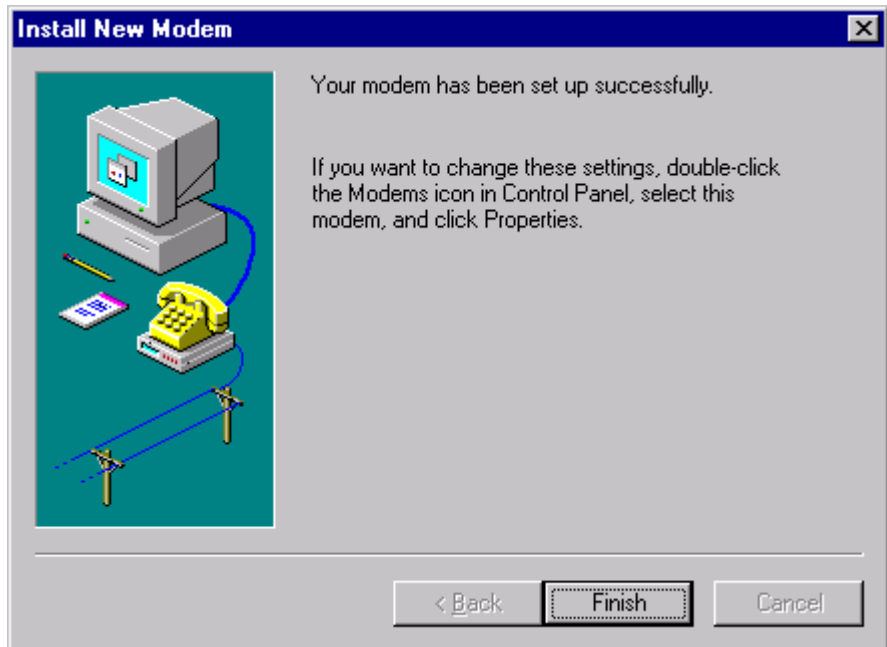


Select "**(Standard Modem Types)**" and "**Dial-Up Networking Serial Cable between 2 PCs**", and then click on "**Next**".



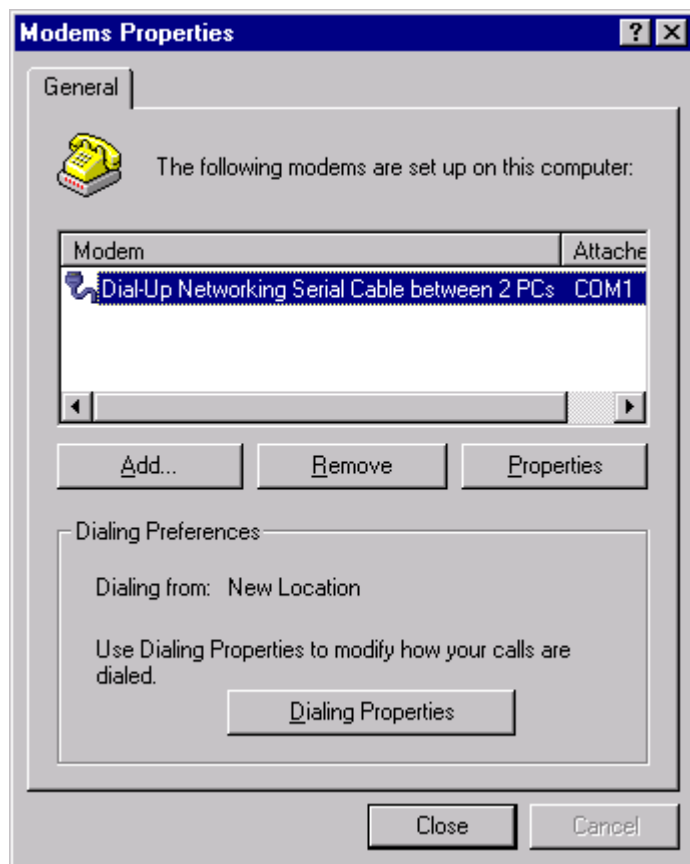
**Note:** The example is given with the communication port COM1. You can select either COM1 or another serial port on your computer.

Select on which port you want to install the direct cable connection and then click on "Next".

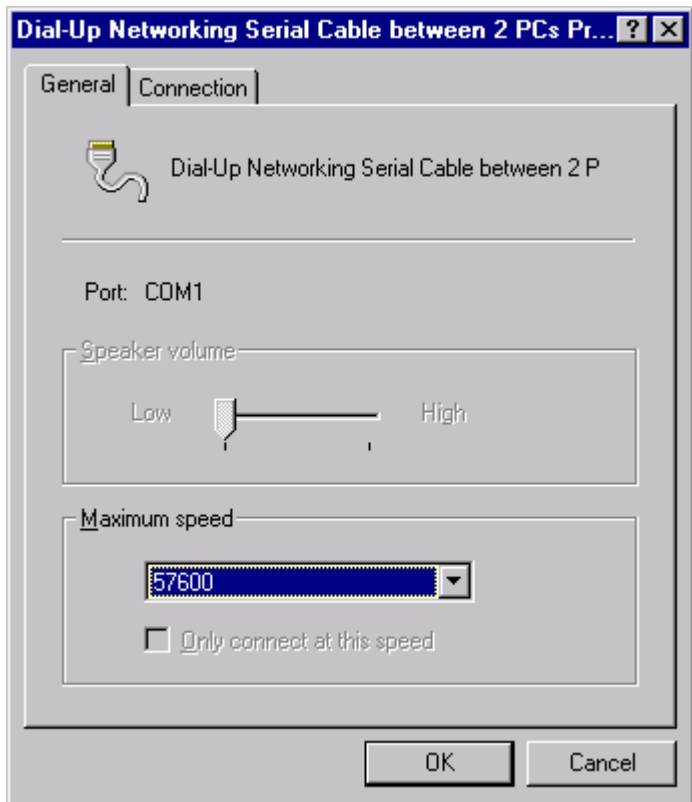


Click on "**Finish**".

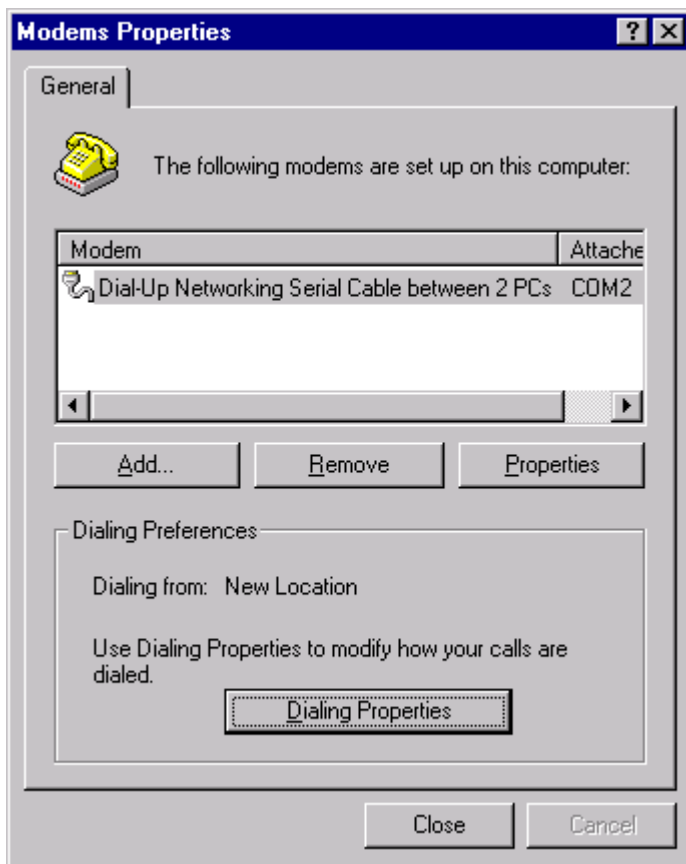
The following dialog box is displayed:



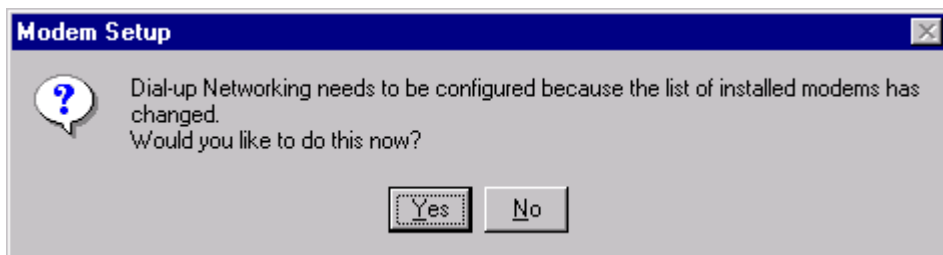
Select "**Dial-Up Networking Serial Cable between 2 PCs**" and click on "**Properties**".



Adjust the "**Maximum speed**" at 57600 bits per second, and click on "**OK**".

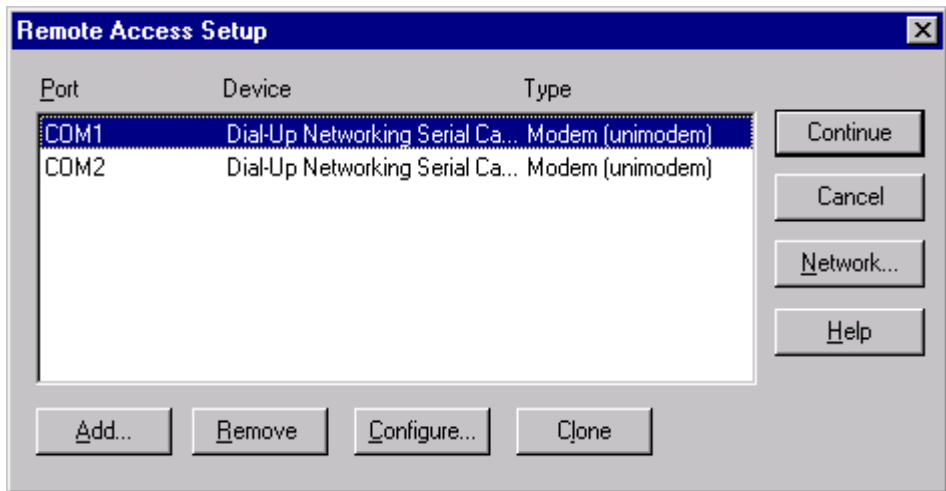


Click on "Close".

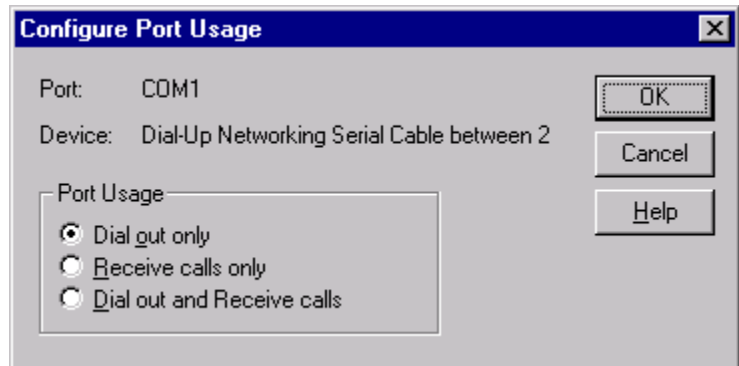


Click on "Yes".

The dialog box **"Remote Access Setup"** is displayed:

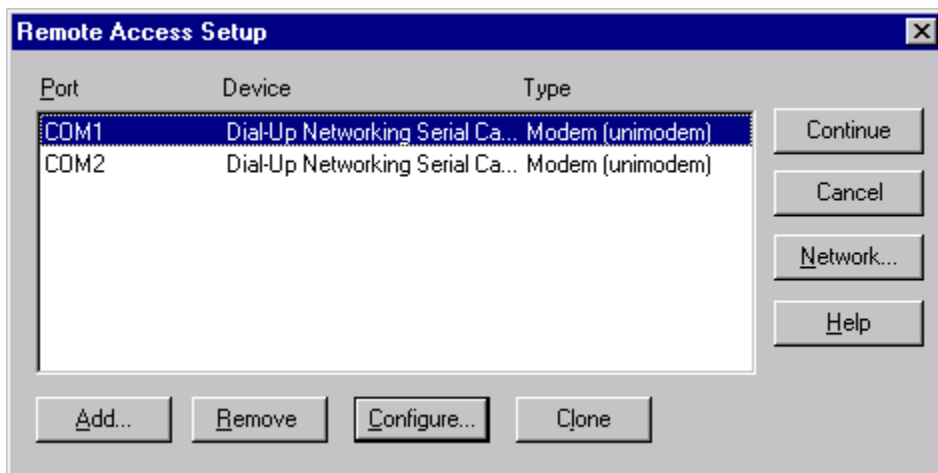


After selecting the communication port, click on **"Configure"**:

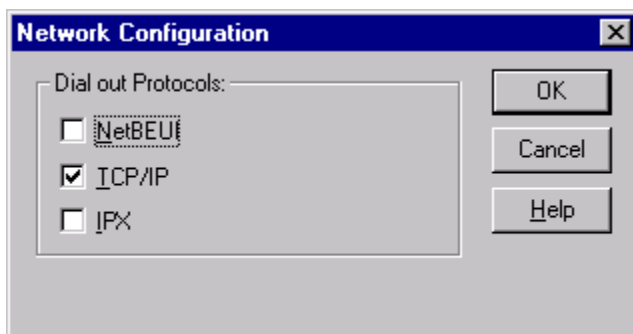


Select **"Dial out only"** and then click **"OK"**.

The dialog box "**Remote Access Setup**" is displayed again:

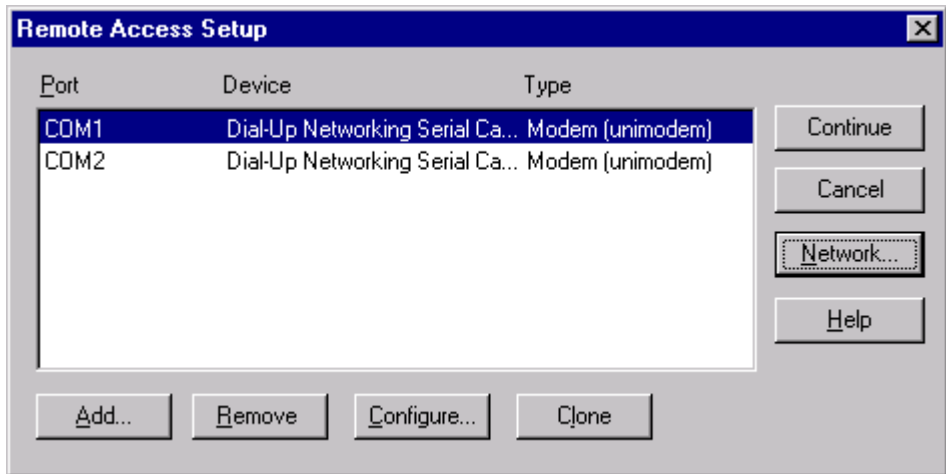


Select "**Network**":

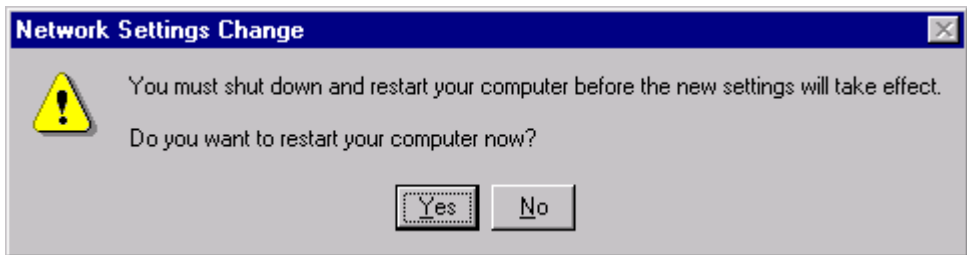


Check "**TCP/IP**" and click "**OK**":

The dialog box "**Remote Access Setup**" is displayed again.



Click on "**Continue**". After a few seconds, the dialog box is displayed:



Click on "**Yes**" to restart your computer. The set up of the Direct Cable Connection is complete.

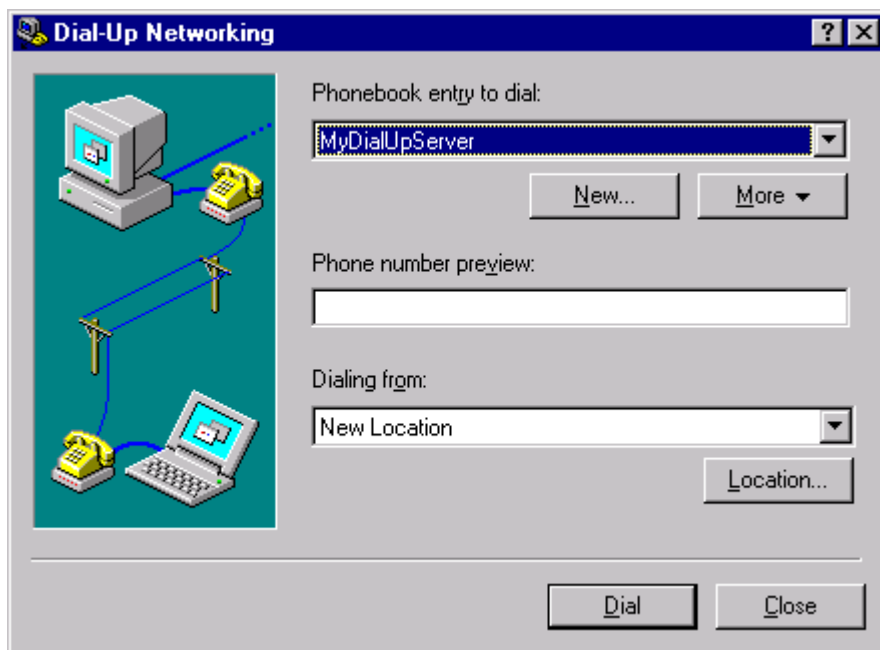
## Configuration of the Dial-Up Networking

---

### Presentation

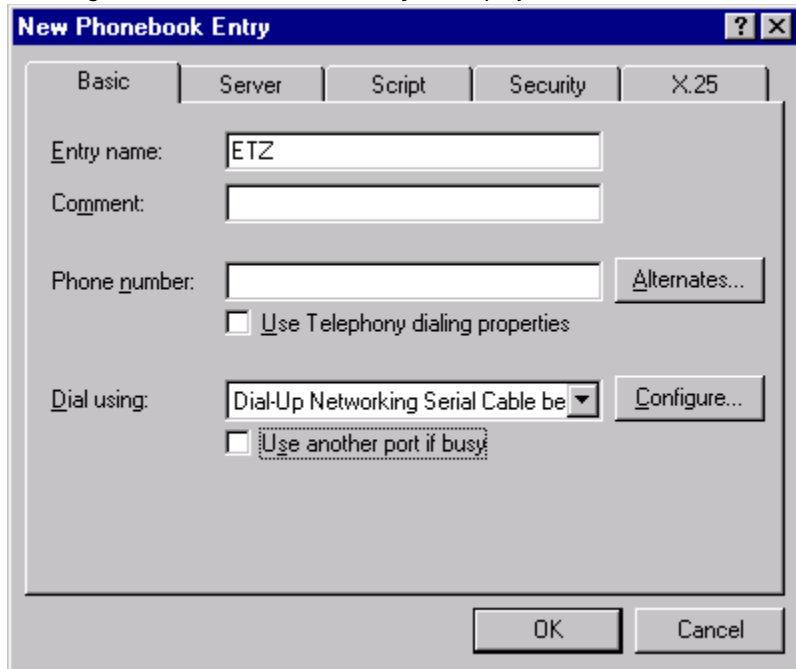
Click on "**Start**", point to "**Programs -> Accessories**", and then click on "**Dial-Up Networking**".

The following dialog box is displayed:

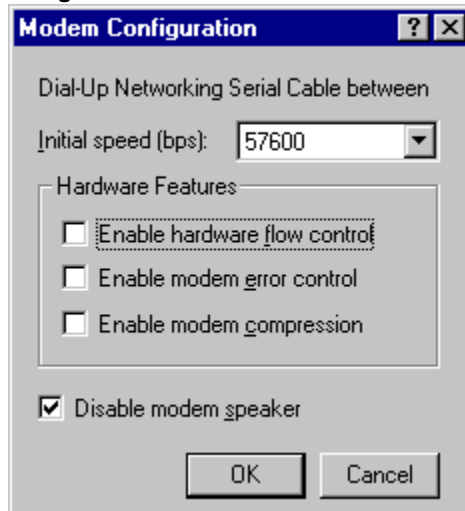


Click on "**New...**".

The dialog box "New Phonebook Entry" is displayed:

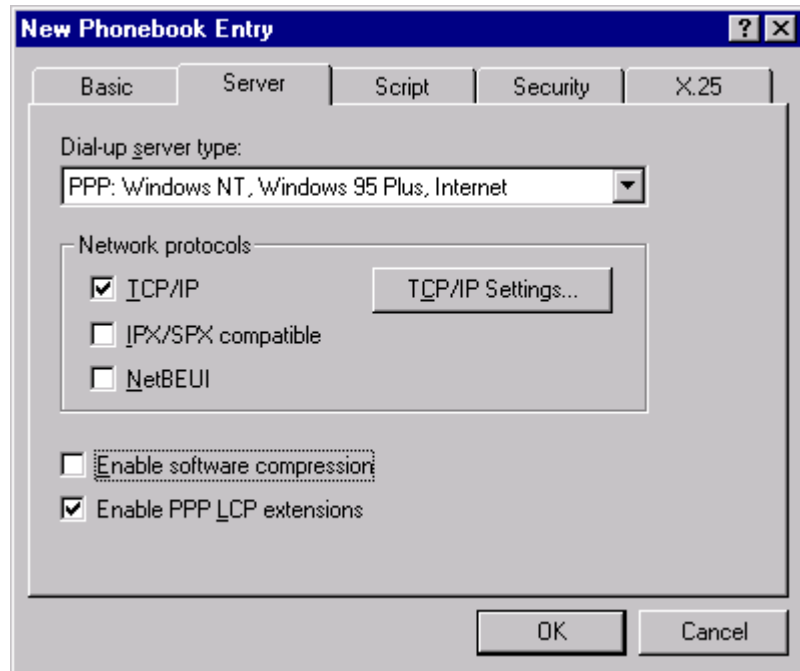


Enter the "Entry Name", and deselect "Use another port if busy". Then click on "Configure":



Set up speed at "57600" bits per second, and deselect icons as shown in this dialog box. Then click on "OK".

In the dialog box "New Phonebook Entry": click on tab "Server".



Select "**PPP: Windows NT ....**" for dial-up server type, check "**TCP/IP**" for the network protocol, "**Enable PPP LCP extensions**", and then click on "**TCP/IP Settings ...**":

**PPP TCP/IP Settings**

Server assigned IP address

Specify an IP address

IP address: 0 . 0 . 0 . 0

Server assigned name server addresses

Specify name server addresses

Primary DNS: 0 . 0 . 0 . 0

Secondary DNS: 0 . 0 . 0 . 0

Primary WINS: 0 . 0 . 0 . 0

Secondary WINS: 0 . 0 . 0 . 0

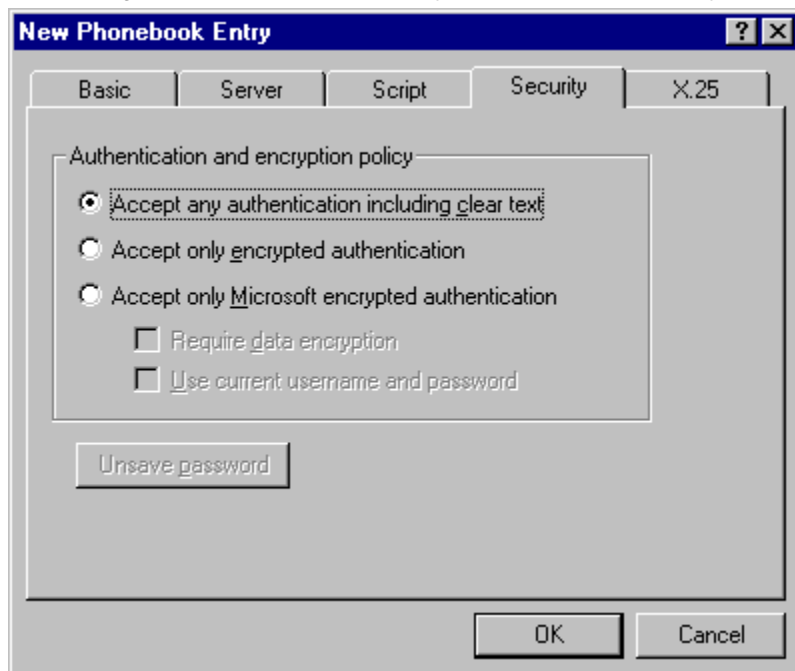
Use IP header compression

Use default gateway on remote network

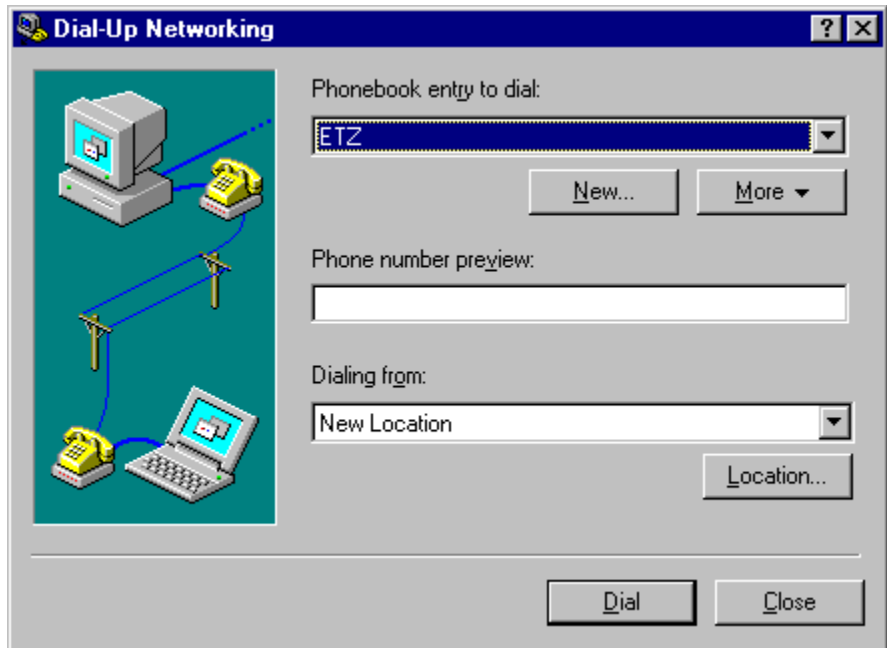
OK Cancel

Check Parameters as described above and then click on "OK".

In the dialog box "New Phonebook Entry", select the tab "Security":



Check "Accept any authentication including clear text", and then click on "OK":



The set-up of the connection "ETZ" is complete and saved in the Phonebook.

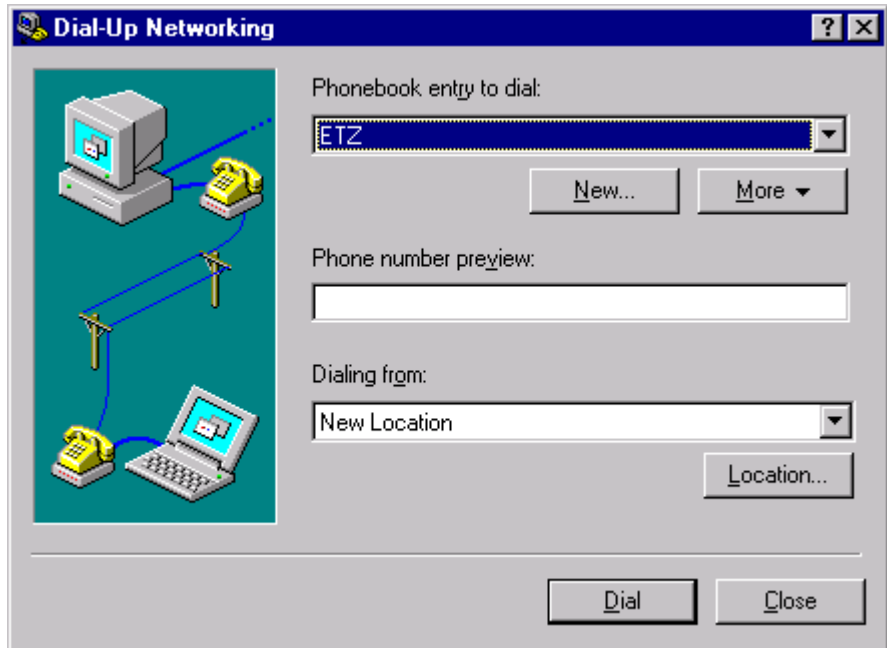
## Connection to the TSX ETZ Module with null modem

---

### Presentation

First, connect the null modem between the computer and the TSX ETZ Module. Click on "**Start**", point to "**Programs -> Accesories**" and then click on "**Dial-Up Networking**".

The following dialog box is displayed:



Select the "**Phonebook Entry**" corresponding to TSX ETZ and click on "**Dial**" to establish the connection.

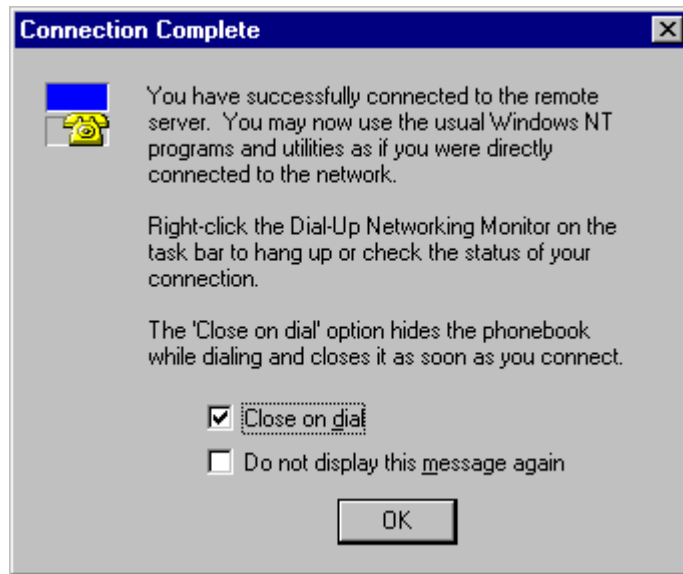


The image shows a Windows dialog box titled "Connect to ETZ". The dialog box has a blue title bar with a question mark icon and a close button. The main text reads: "Enter a user name and password with access to the remote network domain." Below this text are three input fields: "User name:" containing the text "USER", "Password:" containing six asterisks "\*\*\*\*\*", and "Domain:" which is empty. Below the input fields is a checkbox labeled "Save password" which is currently unchecked. At the bottom of the dialog box are two buttons: "OK" and "Cancel".

Type "**User name**" and "**Password**" corresponding to the TSX ETZ http Server (Default values on the TSX ETZ are **USER** for User name and **USER** for Password).

**Note:** This information is requested only for a modem connection. The "domain" field must remain empty. Then, click on "**OK**".

Once connected, the dialog box is displayed:



Click on "OK".

Open your internet browser with the IP Address **85.16.0.2** in order to access TSX ETZ http server.

Refer to the "TSX ETZ User Manual" to set up password, configure and diagnose TSX ETZ Module.

To shut down the connection, click on "**Hang up**" and "**Close**" in the dialog box "**Dial-Up Networking Monitor**".

---

---

# Configuration and connection for Windows Millennium

# 5

---

## At a Glance

### Presentation

This non-exhaustive document is an example of your computer configuration in order to access the TSX ETZ Module http server using its serial link. Although reasonable care has been taken to provide accurate and authoritative information in this document, no responsibility is assumed by Schneider Automation for any consequences arising from the use of this document.

### What's in this Chapter?

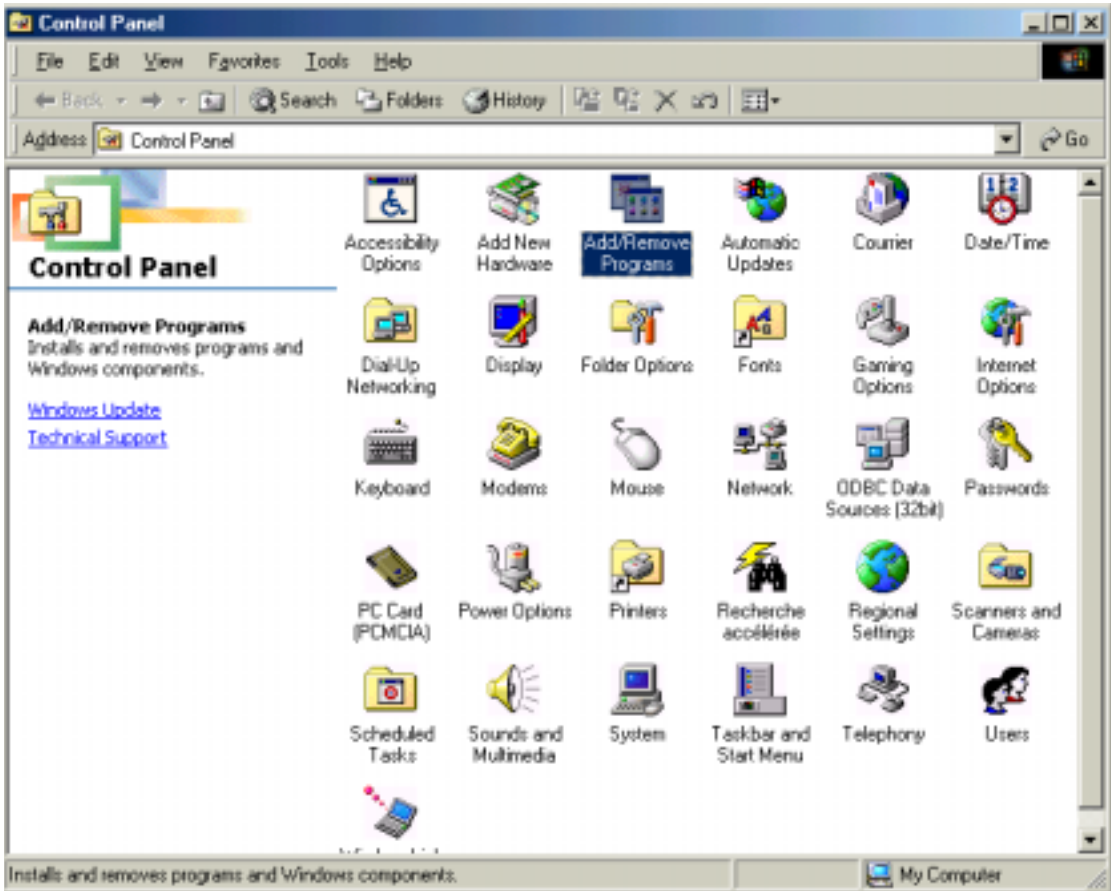
This Chapter contains the following Maps:

Topic	Page
Configuration of the computer	84
Configuration of the direct cable connection	88
Connection to the TSX ETZ Module with null modem	95

## Configuration of the computer

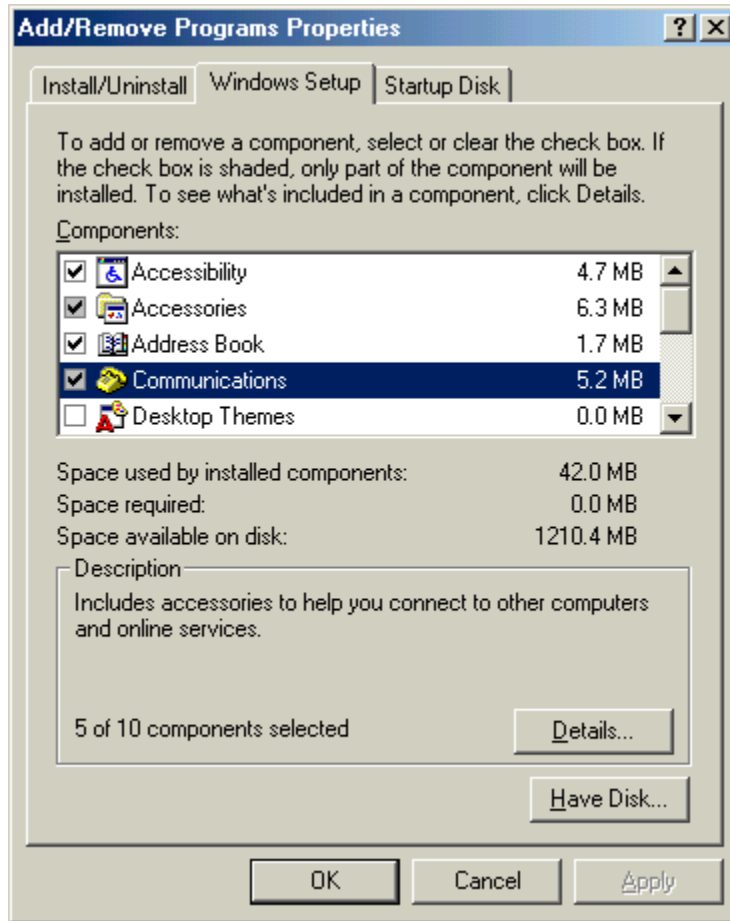
### Presentation

Click on "**Start**", point to "**Settings**", and then click on "**Control Panel**".  
The following dialog box is displayed:



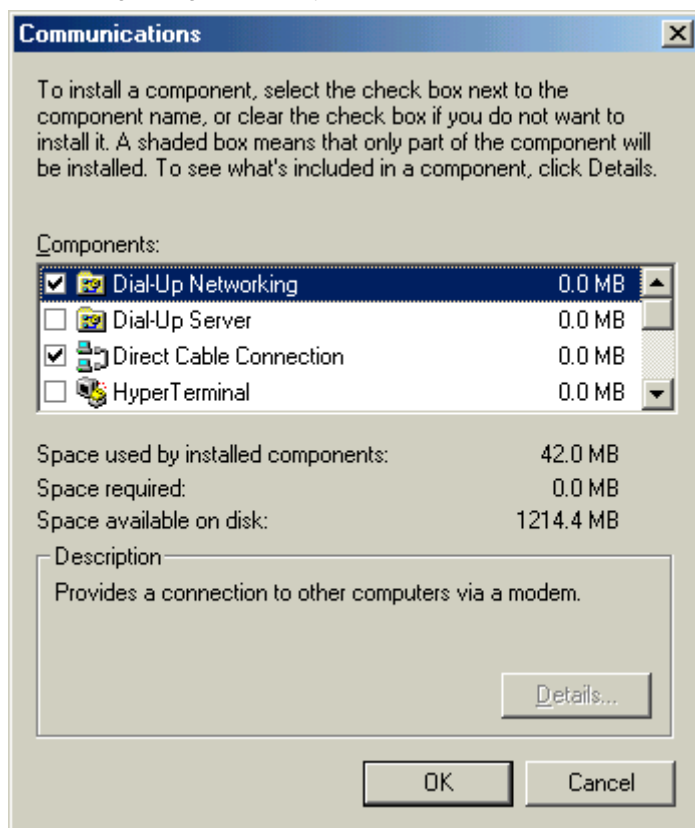
Double click on "**Add / Remove Programs**": in the menu "**Add / Remove Programs Properties**", click on the tab "**Windows Setup**".

The following dialog box is displayed:



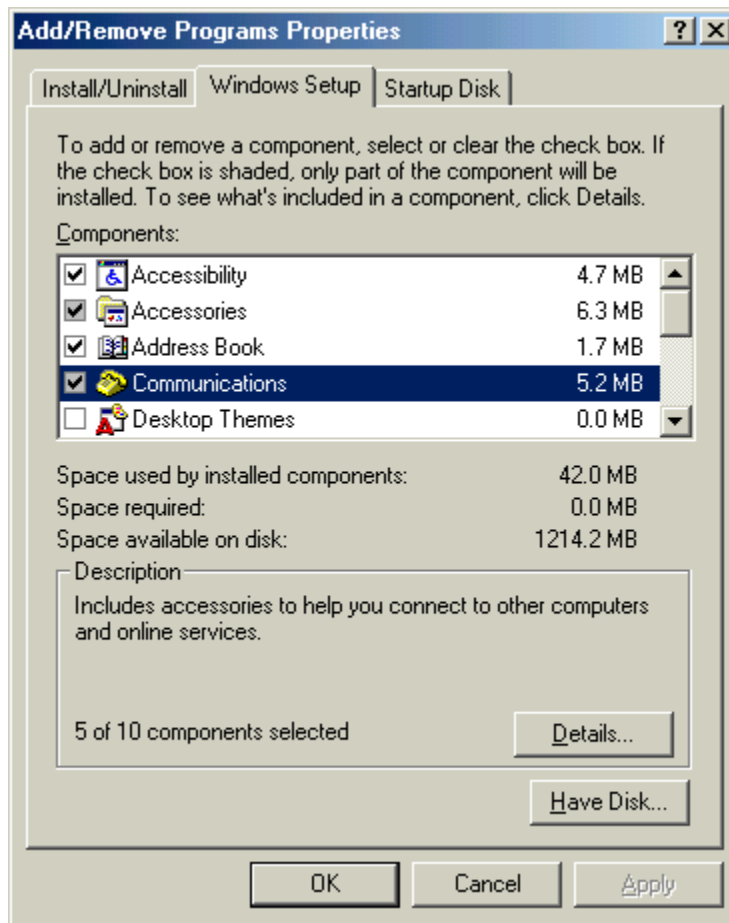
Select "**Communications**" and then click on "**Details**".

The following dialog box displayed:



Add the components "**Dial-Up Networking**" and "**Direct Cable Connection**". Then click on "**OK**".

The following dialog box displayed:



Insert the Windows Millennium CD-ROM if needed and then click on "OK" to validate the component "**Communications**".

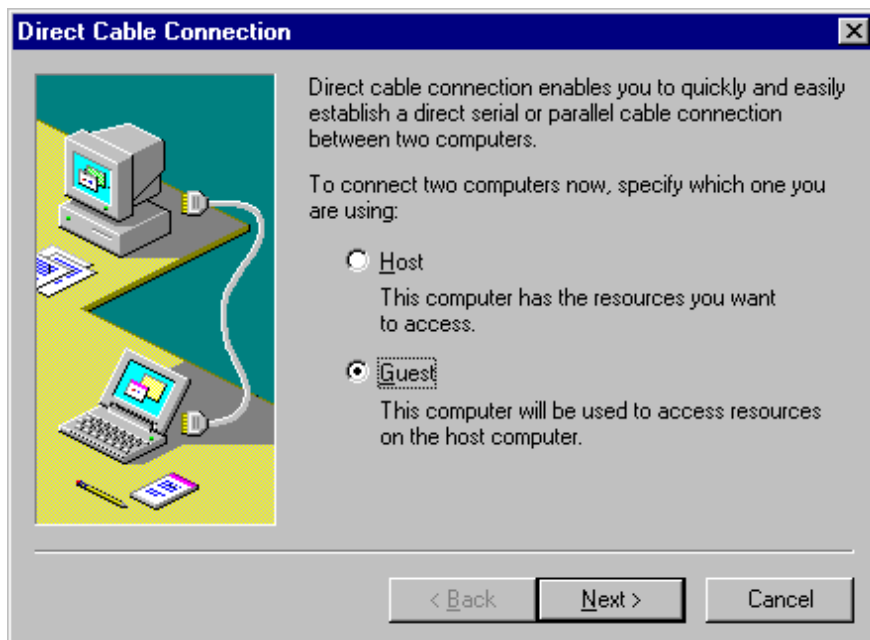
## Configuration of the direct cable connection

---

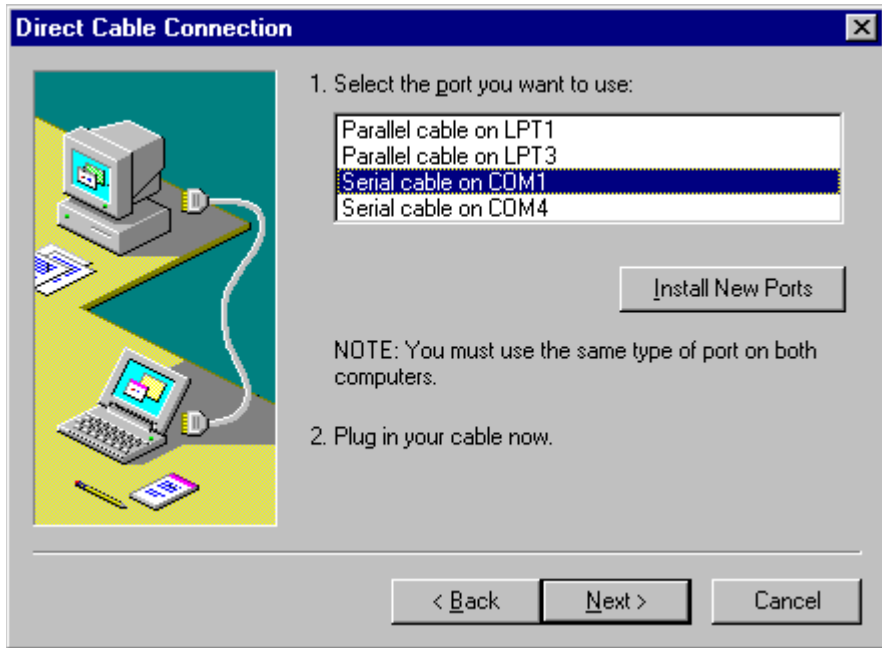
### Presentation

Click on "**Start**", point to "**Programs -> Accessories -> Communications**", and then click on "**Direct Cable Connection**".

The following dialog box is displayed:



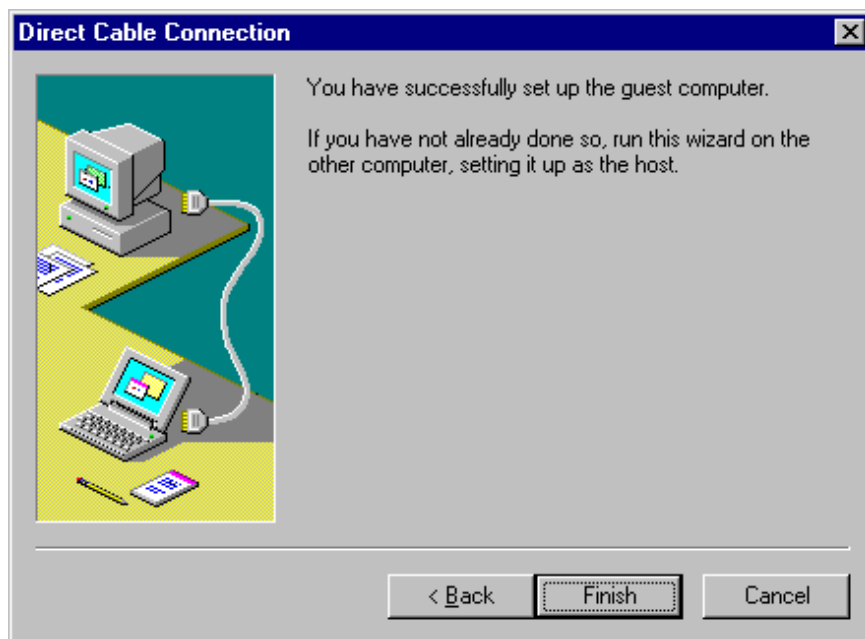
Check "**Guest**" and click on "**Next**":



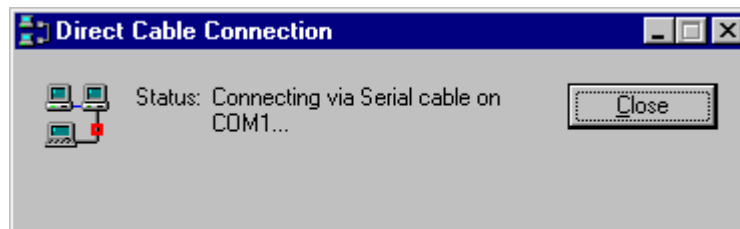
Select the serial port you want to use and click on "Next".

**Note:** The example is given with the communication port COM1. You can select either COM1 or another serial port on your computer.

The following dialog box is displayed:



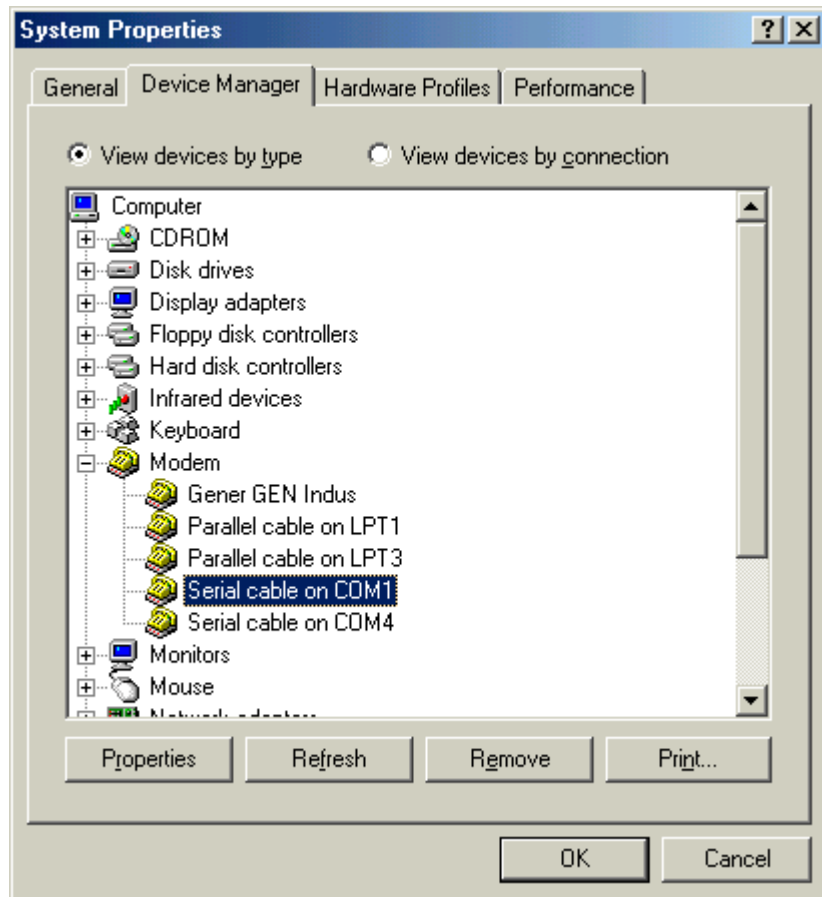
Click on "**Finish**" to complete set up.



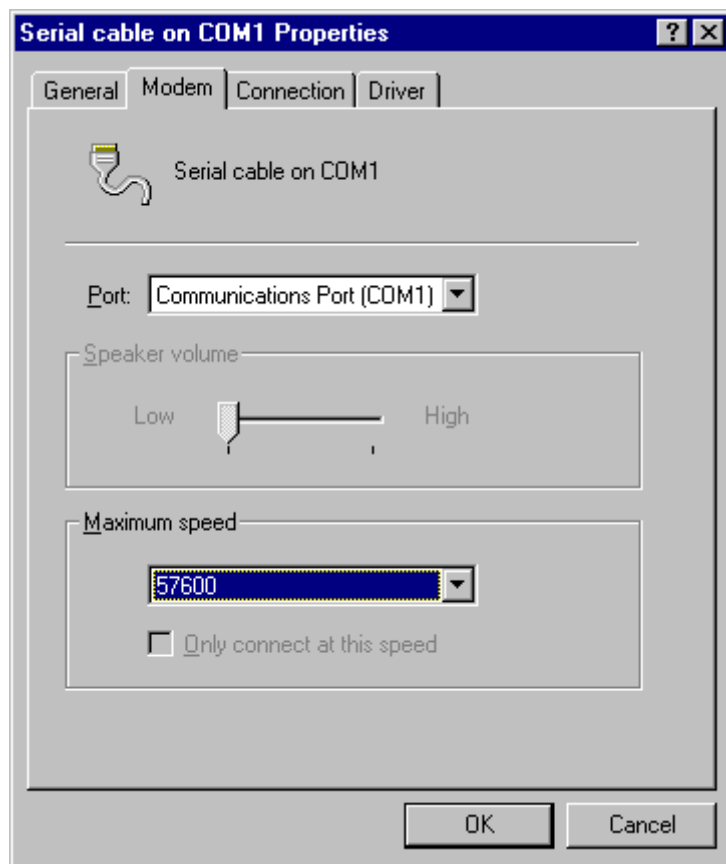
Click on "**Close**". Before connecting, you have change parameters for serial cable COM1.

**Note:** If the connection is not closed fast enough, the user may get the message "Cannot connect to host".

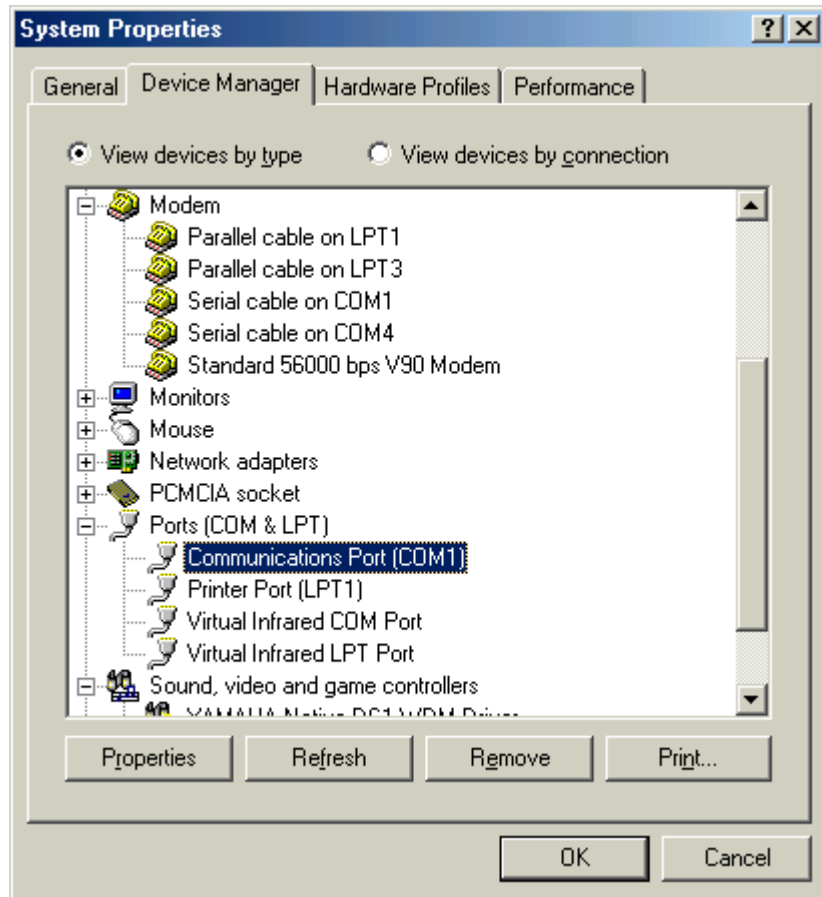
Click on "**Start**", point to "**Settings**", and then click on "**Control Panel**". In the dialog box "**Control Panel**", double click on "**System**" icon. The dialog box "**System Properties**" is displayed:



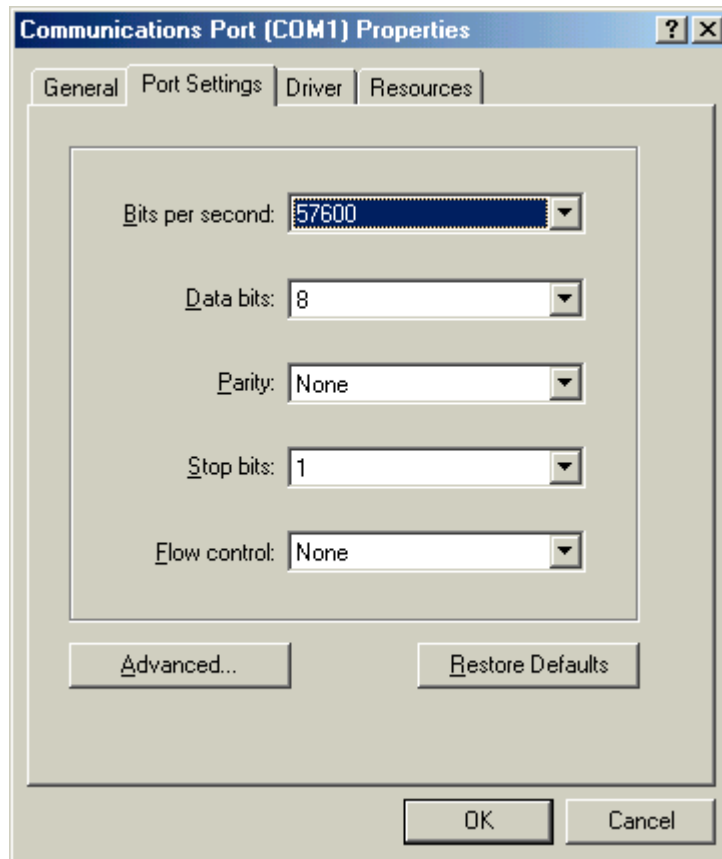
In the menu "**System properties**", select the tab "**Device manager**": click on "**modem**" and select "**Serial cable on COM1**". Then click on "**Properties**": the dialog box "**Serial cable on COM1 Properties**" is displayed:



In the tab "**Modem**", select the communication port you want to use and the speed (**57600** bits per second). Then click on "**OK**" to get back to the dialog box "**System Properties**":



In the tab "Device Manager": click on "Ports (COM & LPT)" and select "Communications Port (COM1)". Click on "Properties".



Click on the tab "**Port Settings**" to adjust the speed at 57600 bits per second, 8 data bits, parity: None, 1 stop bit, Flow control: None, then click on "**OK**".

Click "**OK**" in the dialog box "**System Properties**" to complete the set up. Then close the "**Control Panel**" dialog box.

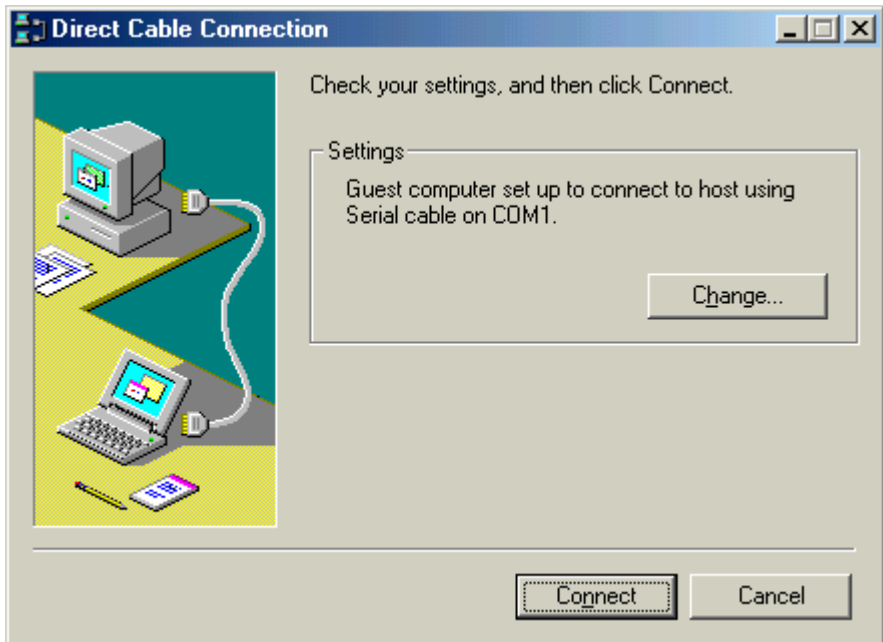
**You must restart your computer before the new settings will take effect.**

---

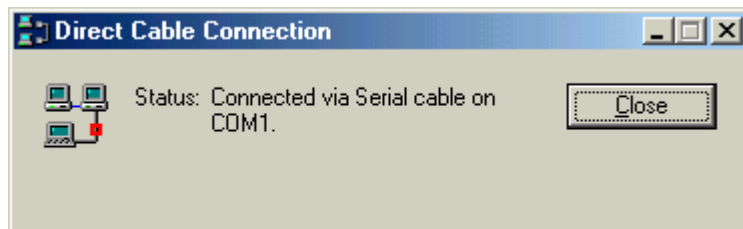
## Connection to the TSX ETZ Module with null modem

### Presentation

First, connect the null modem between the computer and the TSX ETZ Module. Click on "**Start**", point to "**Programs -> Accesories -> Communications**" and then click on "**Direct cable connection**", the following dialog box is displayed:



Click on "**Connect**". Then the following dialog box is displayed:



The connection has been made between the computer and the TSX ETZ. Open your internet browser with the IP Address **85.16.0.2** in order to access TSX ETZ http server. Refer to the "TSX ETZ User Manual" to set up password, configure and diagnose TSX ETZ Module. To shut down the connection, just click on "**Close**".



---

## Connection problems



---

### Connection problems

#### Procedure

It may be due to several causes:

Step	Action
1	Verify that your computer is connected to the TSX ETZ with a null modem cable.
2	You must verify your serial port settings (speed at 57600 bits per second ...).
3	Ensure that the Internet protocol TCP/IP is installed on your computer. If not, please refer to the documentation provided with Windows 95.

Step	Action
4	<p>In certain cases, the connection may not work if the FIFO Buffers are not activated. To access this dialog box, click on "<b>Start</b>", point to "<b>Settings</b>" and click on "<b>Control Panel</b>":</p> <p>For Windows 95, 98 and Millennium:</p> <ul style="list-style-type: none"> <li>● Click on "<b>System</b>" icon.</li> <li>● In the tab "<b>Device Manager</b>", click on "<b>Ports (COM &amp; LPT)</b>" and select "<b>Communications Port (COM1)</b>". Click on "<b>Properties</b>".</li> <li>● Click on the tab "<b>Port Settings</b>" on the dialog box "<b>Communications Port (COM1) Properties</b>".</li> <li>● In the tab "<b>Port Settings</b>", click on "<b>Advanced</b>".</li> <li>● Select the "<b>Use FIFO Buffers</b>" and click "<b>OK</b>" to validate the new settings.</li> </ul> <p>For Windows NT4:</p> <ul style="list-style-type: none"> <li>● Click on "<b>Ports</b>" icon.</li> <li>● Then click on "<b>Settings</b>".</li> <li>● Click on "<b>Advanced</b>".</li> <li>● Select the "<b>FIFO Enabled</b>" and click "<b>OK</b>" to validate the new settings.</li> </ul> <p>For Windows 2000:</p> <ul style="list-style-type: none"> <li>● Click on "<b>System</b>".</li> <li>● In the tab "<b>Hardware</b>", click on "<b>Device Manager</b>".</li> <li>● Then click on "<b>Ports (COM &amp; LPT)</b>" and double click on "<b>Communications Port (COM1)</b>".</li> <li>● In the tab "<b>Port Settings</b>", click on "<b>Advanced</b>".</li> <li>● Select the "<b>Use FIFO Buffers</b>" and click "<b>OK</b>" to validate the new settings.</li> </ul>

**Note:** Nevertheless, if you encounter any other problem with the configuration of your direct cable, you can also refer to Microsoft support at:  
["http://search.support.microsoft.com"](http://search.support.microsoft.com)

---